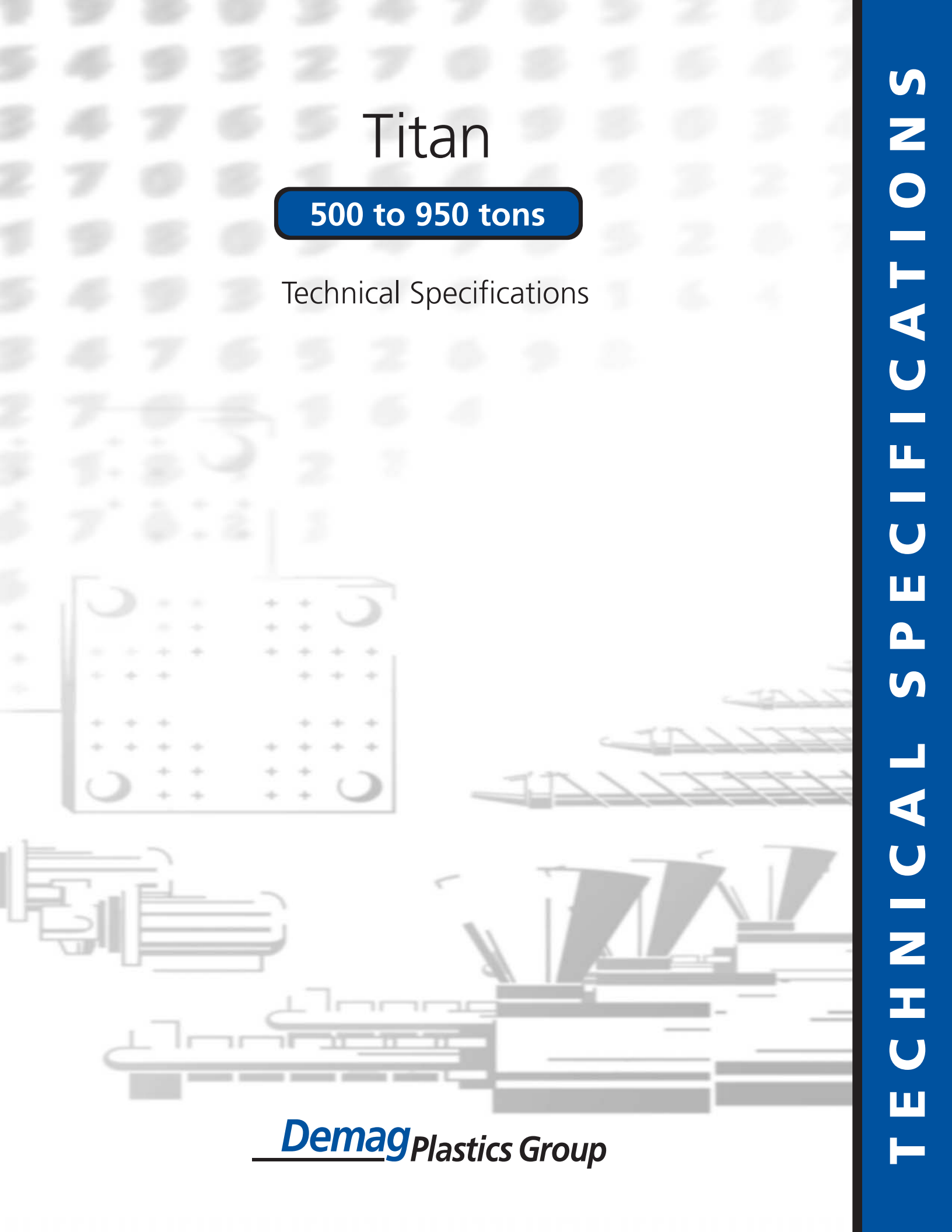


Titan

500 to 950 tons

Technical Specifications



Demag *Plastics Group*

TECHNICAL SPECIFICATIONS

Titan Model 500

Demag Plastics Group		Titan Model 500		
Model Description		Titan Model 500		
International Size Description		1920	2800	4300

Clamp Unit				
Clamp Force	U.S. tons kN	500	4,450	
Open Force	U.S. tons kN	23	208	
Clamp Stroke - Max.	in. mm	51.2	1,300	
Mold Thickness - Min.	in. mm	11.8	300	
Mold Thickness - Max.	in. mm	34.25	870	
Open Daylight - Max.	in. mm	63.0	1,600	
Platen Size				
Horizontal (Standard)	in. mm	51.2	1,300	
Vertical	in. mm	51.2	1,300	
Distance Between Tie Bars				
Horizontal	in. mm	36.4	925	
Vertical	in. mm	36.4	925	
Ejector Stroke	in. mm	9.8	250	
Ejector Force	U.S. tons kN	15.7	140	
Clamp Speeds				
Closing	in./sec. mm/sec.	49.3	1,253	
Opening	in./sec. mm/sec.	51.3	1,304	

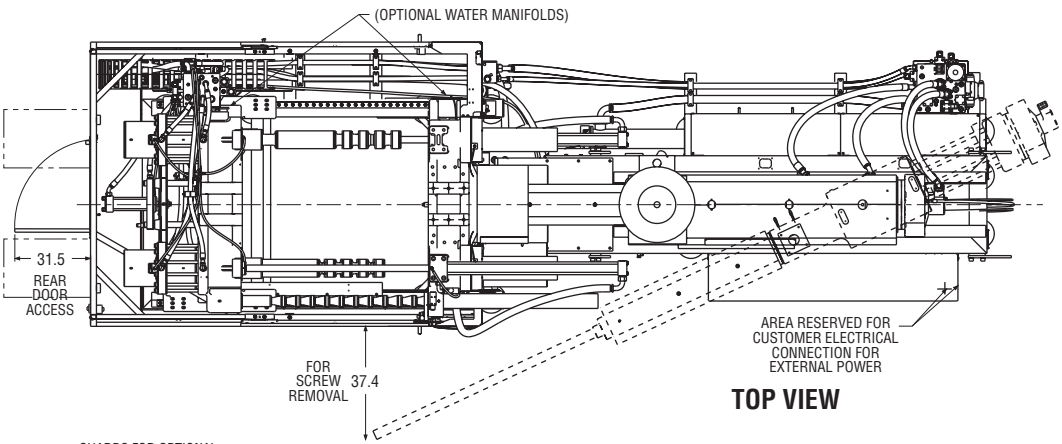
Injection Unit		1920		2800		4300	
	Measure	HiPr	Std.	HiPr	Std.	HiPr	Std.
Screw Diameter	in. mm	2.36 60	2.76 70	2.76 70	3.15 80	3.15 80	3.74 95
Screw L/D Ratio		20/1		20/1		20/1	
Injection Capacity (GPPS)	oz. g	29.6 840	40.3 1,143	45.3 1,285	59.2 1,678	63.5 1,801	89.6 2,540
Injection Capacity	cu. in. ccm	54.4 891	74.0 1,212	83.1 1,362	108.6 1,779	116.6 1,910	164.4 2,694
Recovery Rate (GPPS)	oz./sec. g/sec	2.23 63	3.30 94	2.46 70	3.81 108	2.54 72	3.74 106
Injection Pressure	psi bar	31,191 2,151	22,916 1,580	29,592 2,040	22,656 1,562	32,625 2,249	23,136 1,595
Injection Rate (@ 10,000 psi) (@ 700 bar)	cu. in./sec. ccm/sec	27.9 458	38.0 623	29.4 482	38.4 630	26.7 437	37.6 617
Injection Stroke	in. mm	12.4 315		13.9 354		15.0 380	
Maximum Screw Speed	rpm	318	300	224		150	
Back Pressure Adjust	psi bar	75-300 5-21		75-300 5-21		75-300 5-21	
Barrel Heating Capacity	kW	25.6	33.4	34.0	38.0	42.8	56.0

General Machine Specifications		1920		2800		4300	
	Measure						
Oil Tank Capacity	gal. Liter	130 492		130 492		130 492	
Pump Motor	Hp kW	75 56		75 56		75 56	
Pump Capacity (@100 psi) (@7 bar)	gpm LPM	104.9 397		104.9 397		104.9 397	
Machine Weight (approx.)	lb. kg	43,700 19,800		45,400 20,600		48,000 21,800	
Machine Dimensions							
Length	ft. m	25.7 7.8		25.8 7.9		27.7 8.5	
Width	ft. m	7.4 2.2		7.4 2.2		7.4 2.2	
Height	ft. m	8.7 2.7		8.7 2.7		8.7 2.7	

Performance specifications are based on theoretical data and mold, material and conditions. Since continuous improvement is the policy of Demag Plastics Group, we reserve the right to change specifications, designs and performance data without prior notice or obligation.

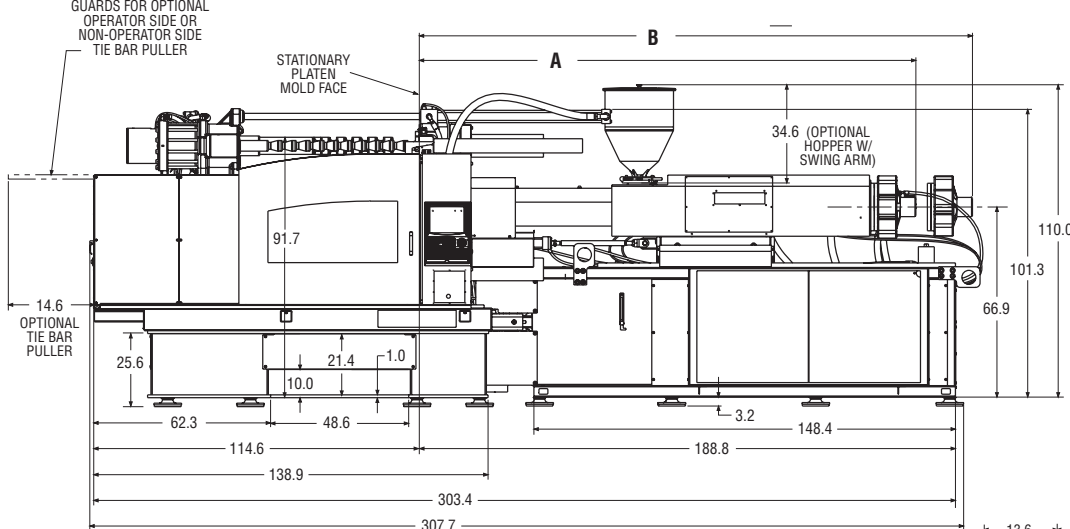
The specifications listed are standard. However, Demag Plastics Group will provide engineered options and solutions to meet virtually any performance requirements including high-speed configurations.

Titan Model 500

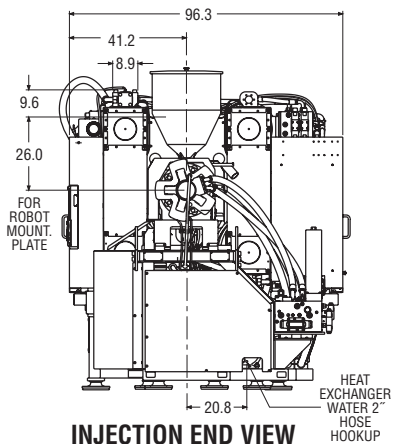


TOP VIEW

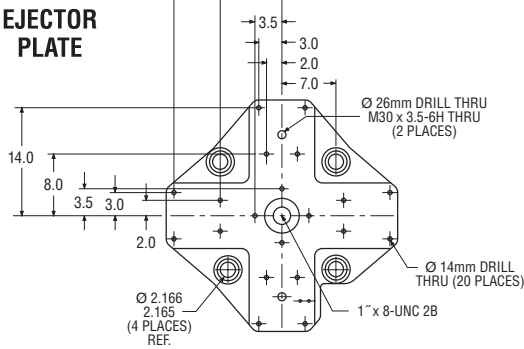
Injection Unit	A (in.)	B (in.)
STANDARD BARREL		
70mm 20:1 1920RR	158.8	178.5
70mm 25:1 1920RR	172.4	192.3
80mm 20:1 2800RR	174.8	194.5
80mm 25:1 2800RR	190.6	210.2
95mm 20:1 4300RR	198.4	218.1
95mm 25:1 4300RR	217.1	236.8



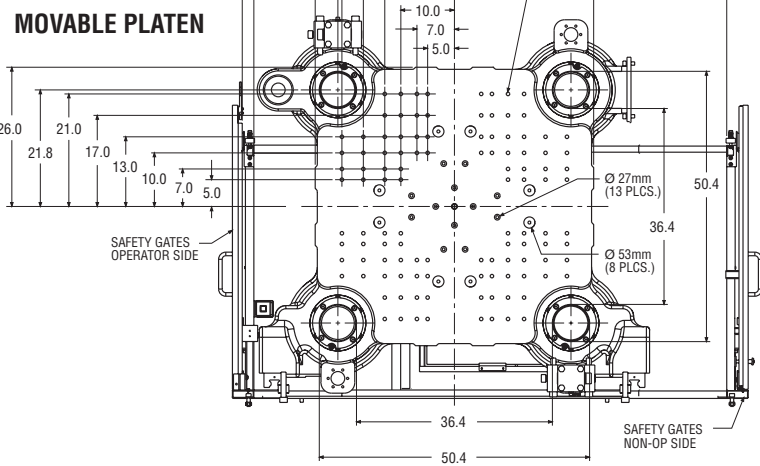
OPERATOR SIDE



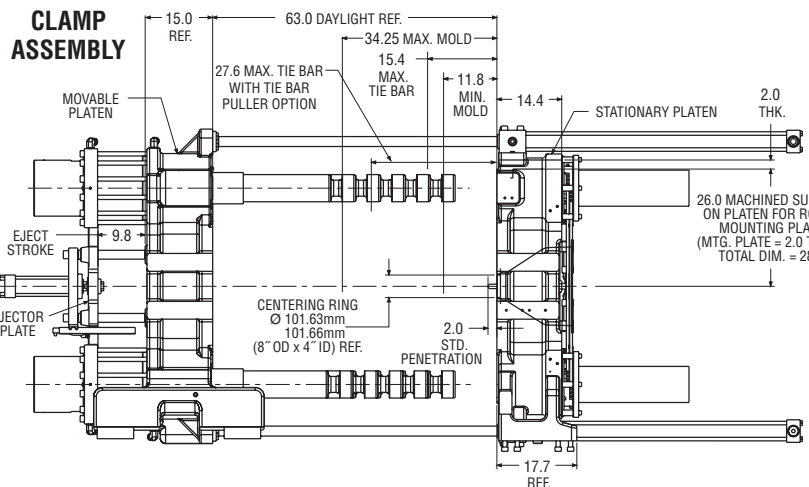
INJECTION END VIEW



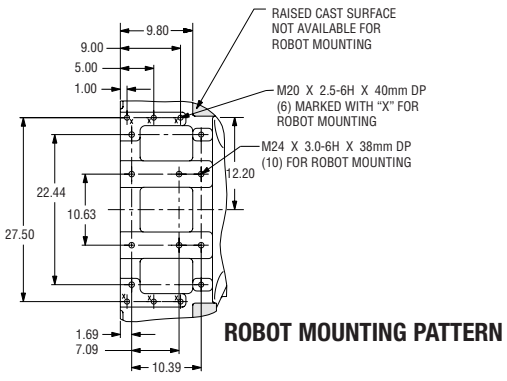
EJECTOR PLATE



MOVABLE PLATEN



CLAMP ASSEMBLY



ROBOT MOUNTING PATTERN

Titan Model 730

Demag Plastics Group			Titan Model 730			
Model Description			Titan Model 730			
International Size Description			2800	4300	6800	6800-C
Clamp Unit						
Clamp Force	U.S. tons	kN		730	6,497	
Open Force	U.S. tons	kN		37	330	
Clamp Stroke - Max.	in.	mm		57.1	1,450	
Mold Thickness - Min.	in.	mm		13.8	350	
Mold Thickness - Max.	in.	mm		40.7	1,035	
Open Daylight - Max.	in.	mm		70.9	1,800	
Platen Size						
Horizontal (Standard)	in.	mm		57.1	1,450	
Vertical	in.	mm		57.1	1,450	
Distance Between Tie Bars						
Horizontal	in.	mm		42.3	1,075	
Vertical	in.	mm		42.3	1,075	
Ejector Stroke	in.	mm		9.8	250	
Ejector Force	U.S. tons	kN		15.7	140	
Clamp Speeds						
Closing	in./sec.	mm/sec.		39.1	993	
Opening	in./sec.	mm/sec.		40.7	1,034	

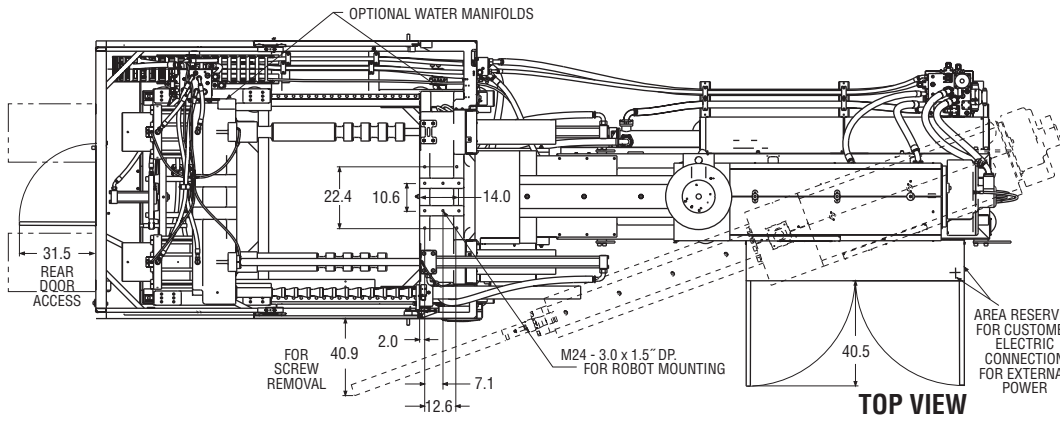
Injection Unit			2800		4300		6800		6800-C	
	Measure		HiPr	Std.	HiPr	Std.	HiPr	Std.	Std.	
Screw Diameter	in.	mm	2.76 70	3.15 80	3.15 80	3.74 95	3.74 95	4.33 110	4.72 120	
Screw L/D Ratio			20/1		20/1		20/1		20/1	
Injection Capacity (GPPS)	oz.	g	45.3 1,285	59.2 1,678	63.5 1,801	89.6 2,540	103.7 2,941	139.1 3,943	165.5 4,692	
Injection Capacity	cu. in.	ccm	83.1 1,362	108.6 1,779	116.6 1,910	164.4 2,694	190.3 3,119	255.2 4,181	303.7 4,976	
Recovery Rate (GPPS)	oz./sec.	g/sec	3.07 87	4.46 127	3.17 90	4.66 132	3.06 87	4.17 118	4.06 115	
Injection Pressure	psi	bar	29,592 2,040	22,656 1,562	32,625 2,249	23,136 1,595	31,490 2,171	23,488 1,619	19,736 1,361	
Injection Rate (@ 10,000 psi) (@ 700 bar)	cu. in./sec.	ccm/sec	36.6 600	47.9 784	33.2 545	46.9 768	34.4 564	46.2 757	54.9 900	
Injection Stroke	in.	mm	13.9 354		15.0 380		17.3 440		17.3 440	
Maximum Screw Speed	rpm		279	263	186		123		99	
Back Pressure Adjust	psi	bar	75-300 5-21		75-300 5-21		75-300 5-21		75-300 5-21	
Barrel Heating Capacity	kW		34.0	38.0	42.8	56.0	53.8	63.1	68.2	

General Machine Specifications			2800		4300		6800		6800-C	
	Measure									
Oil Tank Capacity	gal.	Liter	160 606		160 606		160 606		160 606	
Pump Motor	Hp	kW	100 75		100 75		100 75		100 75	
Pump Capacity (@ 100 psi) (@ 7 bar)	gpm	LPM	128.8 488		128.8 488		128.8 488		128.8 488	
Machine Weight (approx.)	lb.	kg	56,900 25,800		59,500 27,000		62,500 28,400		63,000 28,600	
Machine Dimensions										
Length	ft.	m	28.8 8.79		29.3 8.92		31.2 9.50		32.9 10.02	
Width	ft.	m	9.0 2.74		9.0 2.74		9.0 2.74		9.0 2.74	
Height	ft.	m	9.6 2.93		9.6 2.93		9.6 2.93		9.6 2.93	

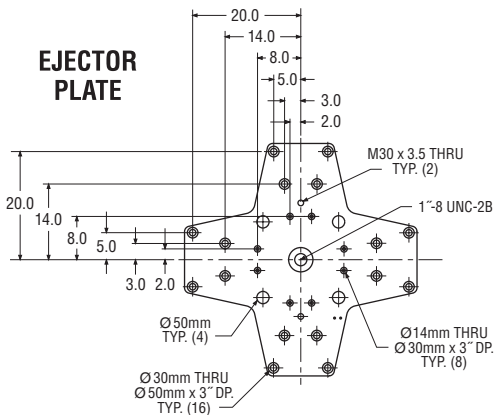
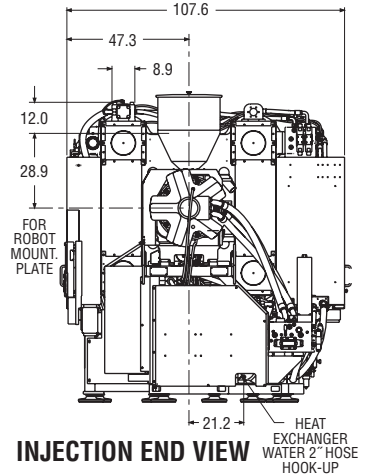
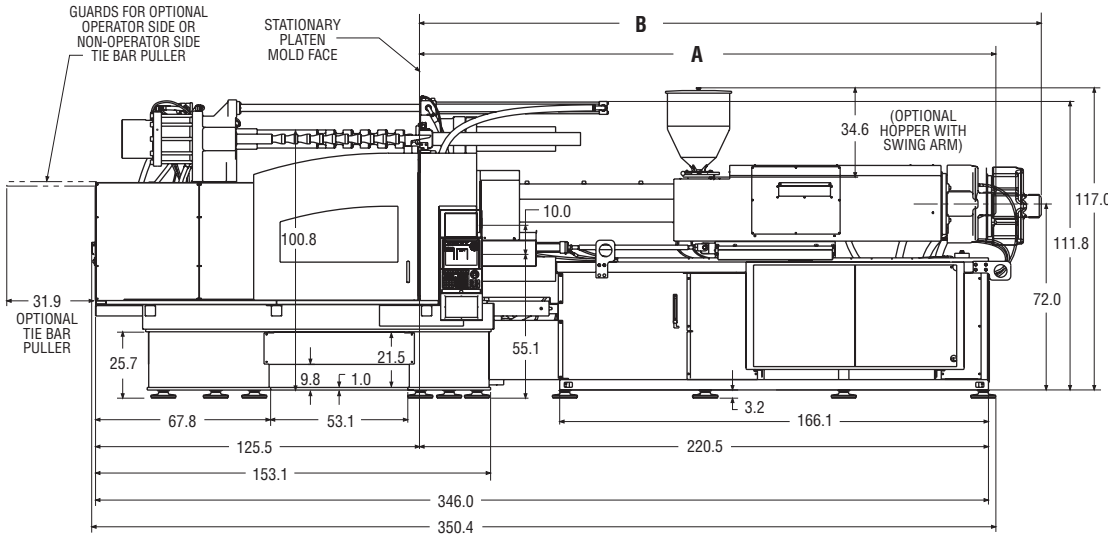
Performance specifications are based on theoretical data and mold, material and conditions. Since continuous improvement is the policy of Demag Plastics Group, we reserve the right to change specifications, designs and performance data without prior notice or obligation.

The specifications listed are standard. However, Demag Plastics Group will provide engineered options and solutions to meet virtually any performance requirements including high-speed configurations.

Titan Model 730

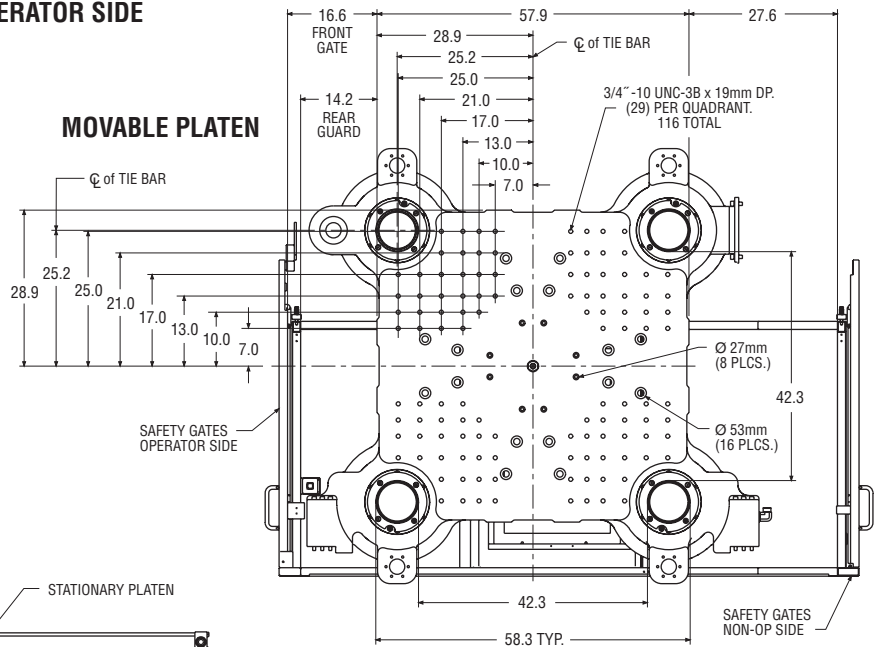


Injection Unit	A (in.)	B (in.)
STANDARD BARREL		
80mm 20:1 2800RR	174.8	200.4
80mm 25:1 2800RR	190.6	216.1
95mm 20:1 4300RR	200.4	226.0
95mm 25:1 4300RR	219.1	244.7
110mm 20:1 6800RR	223.2	248.8
110mm 25:1 6800RR	244.9	270.5

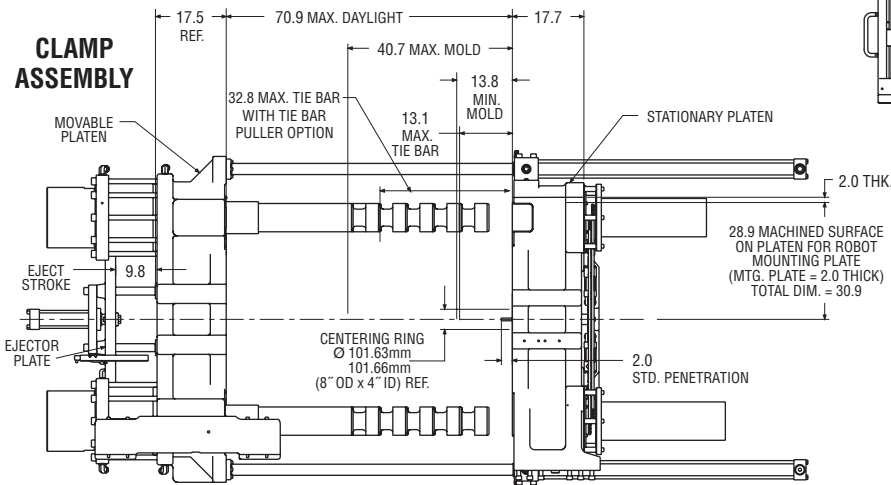


OPERATOR SIDE

MOVABLE PLATEN



CLAMP ASSEMBLY



Titan Model 950

Demag Plastics Group		Titan Model 950			
Model Description		4300	6800	6800-C	12300
International Size Description					

Clamp Unit					
Clamp Force	U.S. tons kN	950	8,455		
Open Force	U.S. tons kN	57	508		
Clamp Stroke - Max.	in. mm	68.9	1,750		
Mold Thickness - Min.	in. mm	17.7	450		
Mold Thickness - Max.	in. mm	48.0	1,220		
Open Daylight - Max.	in. mm	86.6	2,200		
Platen Size					
Horizontal (Standard)	in. mm	66.4	1,686		
Vertical	in. mm	60.6	1,540		
Distance Between Tie Bars					
Horizontal	in. mm	49.2	1,249		
Vertical	in. mm	42.3	1,075		
Ejector Stroke	in. mm	10.8	275		
Ejector Force	U.S. tons kN	24.5	218		
Clamp Speeds					
Closing	in./sec. mm/sec.	34.4	874		
Opening	in./sec. mm/sec.	33.6	854		

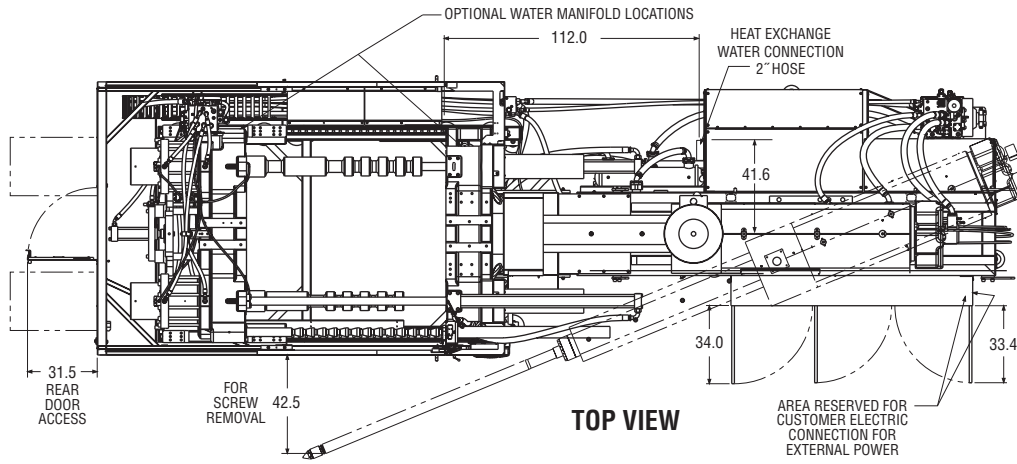
Injection Unit		4300		6800		6800-C		12300	
Measure		HiPr	Std.	HiPr	Std.	Std.	HiPr	Std.	
Screw Diameter	in. mm	3.15 80	3.74 95	3.74 95	4.33 110	4.72 120	4.33 110	5.12 130	
Screw L/D Ratio		20/1		20/1		20/1		20/1	
Injection Capacity (GPPS)	oz. g	63.5 1,801	89.6 2,540	103.7 2,941	139.1 3,943	165.5 4,692	264.9 7,509	189.6 5,376	
Injection Capacity	cu. in. ccm	116.6 1,910	164.4 2,694	190.3 3,119	255.2 4,181	303.7 4,976	348.0 5,702	486.0 7,964	
Recovery Rate (GPPS)	oz./sec. g/sec	3.91 111	5.53 157	4.11 117	5.60 159	4.89 139	3.81 108	5.64 160	
Injection Pressure	psi bar	32,625 2,249	23,136 1,595	31,490 2,171	23,488 1,619	19,736 1,361	31,457 2,169	22,522 1,553	
Injection Rate (@ 10,000 psi) (@ 700 bar)	cu. in./sec. ccm/sec	44.6 731	62.9 1,031	46.2 758	62.0 1,016	73.8 1,209	49.9 817	69.7 1,142	
Injection Stroke	in. mm	15.0 380		17.3 440		17.3 440		23.6 600	
Maximum Screw Speed	rpm	221		165		119		111	
Back Pressure Adjust	psi bar	75-300 5-21		75-300 5-21		75-300 5-21		75-300 5-21	
Barrel Heating Capacity	kW	42.8	56.0	53.8	63.1	68.2	77.8	82.2	

General Machine Specifications		4300		6800		6800-C		12300	
Measure									
Oil Tank Capacity	gal. Liter	200 757		200 757		200 757		200 757	
Pump Motor	Hp kW	100+30 75+22		100+30 75+22		100+30 75+22		100+30 75+22	
Pump Capacity (@ 100 psi) (@ 7 bar)	gpm LPM	171.3 648		171.3 648		171.3 648		171.3 648	
Machine Weight (approx.)	lb. kg	87,000 39,500		90,000 40,900		90,500 41,100		97,500 44,300	
Machine Dimensions									
Length	ft. m	32.7 9.96		33.9 10.34		34.5 10.53		34.0 10.36	
Width	ft. m	9.9 3.01		9.9 3.01		9.9 3.01		9.9 3.01	
Height	ft. m	10.2 3.10		10.2 3.10		10.2 3.10		10.2 3.10	

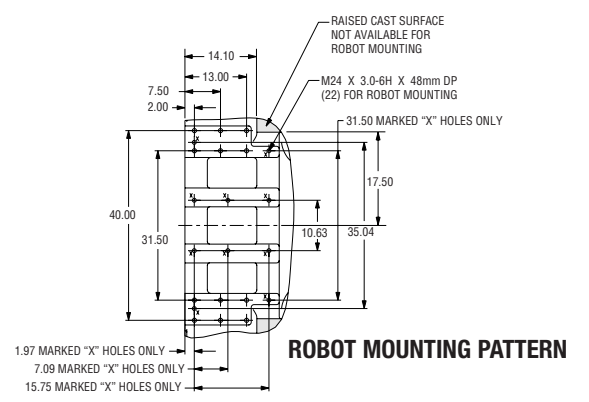
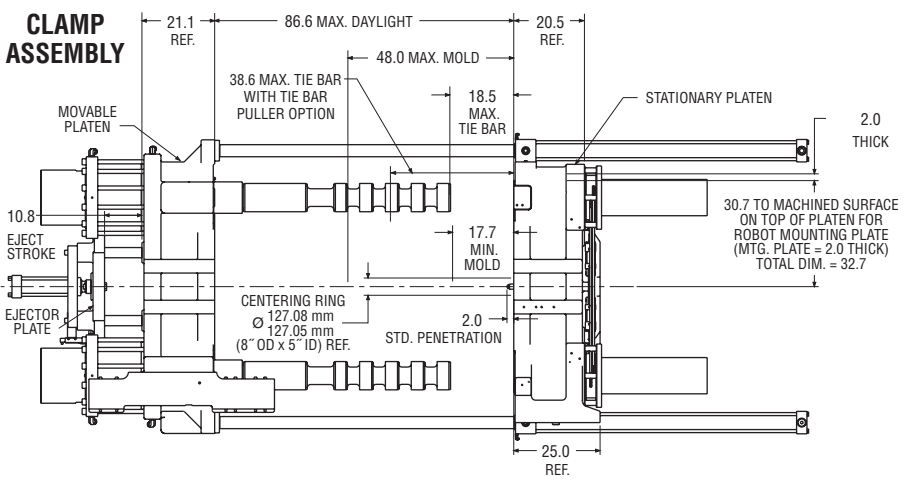
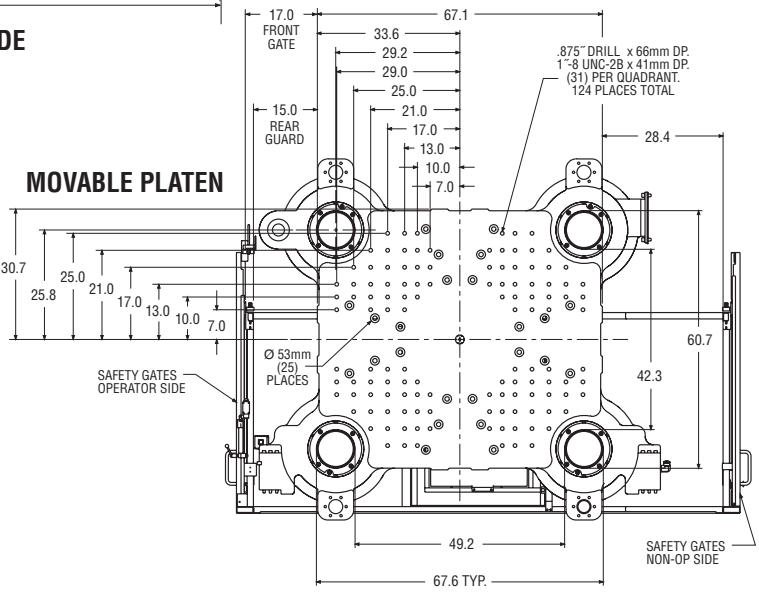
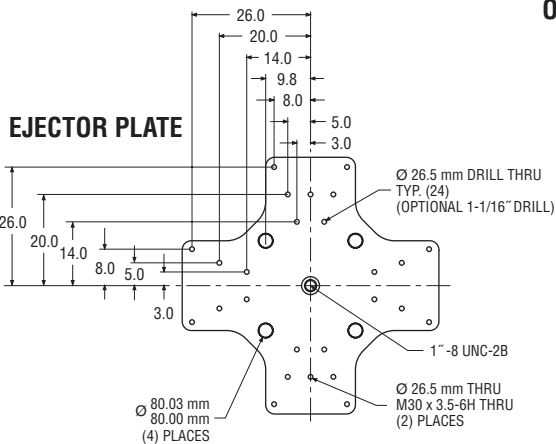
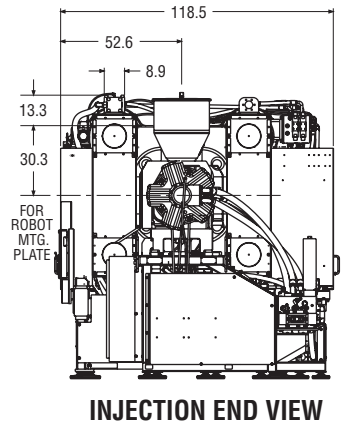
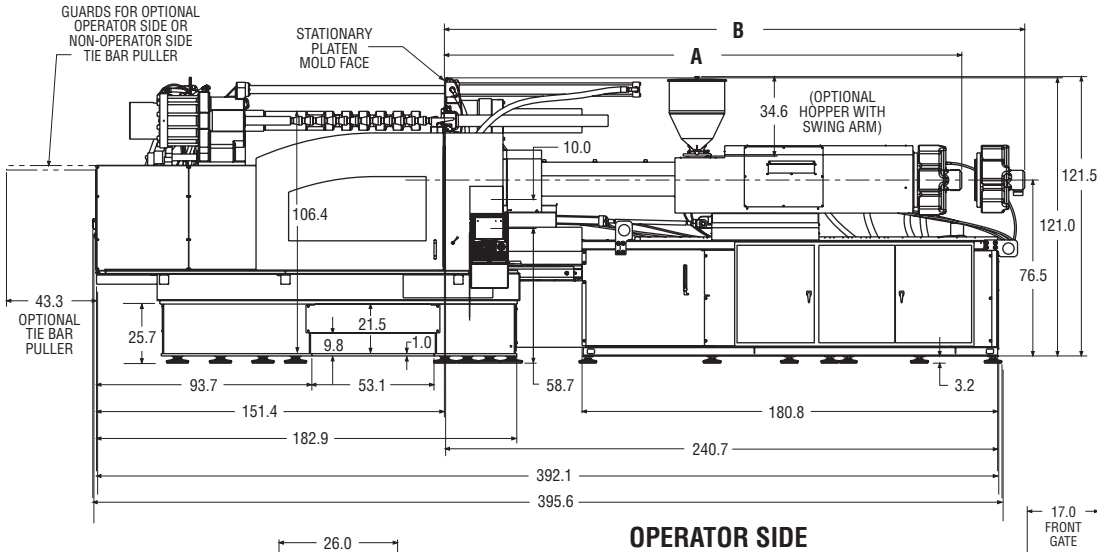
Performance specifications are based on theoretical data and mold, material and conditions. Since continuous improvement is the policy of Demag Plastics Group, we reserve the right to change specifications, designs and performance data without prior notice or obligation.

The specifications listed are standard. However, Demag Plastics Group will provide engineered options and solutions to meet virtually any performance requirements including high-speed configurations.

Titan Model 950

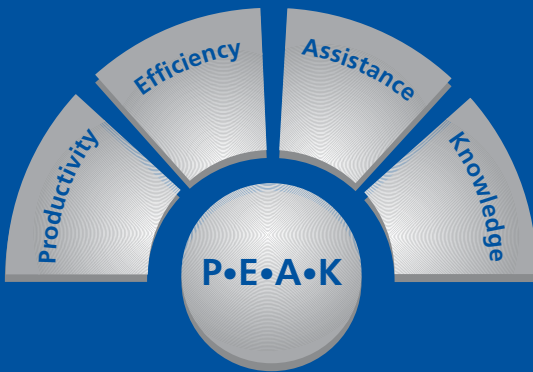


Injection Unit	A (in.)	B (in.)
STANDARD BARREL		
95mm 20:1 4300RR	200.4	232.9
95mm 25:1 4300RR	219.1	251.6
110mm 20:1 6800RR	223.2	255.7
110mm 25:1 6800RR	244.9	277.4
120mm 20:1 6800RR	230.7	263.2
120mm 25:1 6800RR	254.3	286.8
130mm 20:1 12,300TC	223.4	256.3
130mm 25:1 12,300TC	249.0	281.9



INDUSTRY-LEADING AFTERMARKET SUPPORT

A SYSTEMATIC APPROACH TO P•E•A•K PERFORMANCE IN YOUR OPERATIONS!



PRODUCTIVITY

Your equipment represents a major investment. Getting the maximum return on that investment means keeping it in top operating shape all the time. To minimize downtime. Reduce and eliminate waste. And making sure you get the optimum return for every hour – and every dollar – of labor you spend.

EFFICIENCY

Chances are, the machines you already have are capable of producing more and better products than they ever have before. From recommissioning idle machinery to modernization for expanded capabilities and energy efficiency, Demag Plastics Group can help you get more from your current machines.

ASSISTANCE

Our staff of experts are ready to tackle your toughest problems, from cycle time improvement to scrap reduction, energy savings and more. Our Applications Group can even set up trial runs on molds, let you test-drive different injection molding machines, and help troubleshoot or refine your processes.

KNOWLEDGE

You're only as good as your people. We know that. That's why our Customer Technical Support Systems include extensive professional hands-on training services, either at one of our seven training centers or on-site at your location.

Our commitment to 100 percent customer satisfaction is part of the Demag Plastics Group experience. Contact us at 866.491.1045 or visit www.molderactionnetwork.com.

REPLACEMENT PARTS

Demag Plastics Group maintains an extensive, computerized inventory of replacement parts to assure customers of quick delivery. e-mail: partsover@dpg.com

TECHNICAL SERVICE

The Technical Service Department is standing by with a wide range of services – installation and start-up, troubleshooting, field service and predefined and customized preventive maintenance contracts. e-mail: technicalservice@dpg.com

TRAINING

We offer classes at our customer training center in Strongsville (OH) or can customize training classes to meet your needs at your facility. e-mail: technicaltraining@dpg.com

APPLICATIONS GROUP

The Applications Group offers customers a wide range of services, including designing turnkey solutions, including auxiliaries, robotics, automation and project management; specifying Demag machine configurations for specific customer applications; analyzing and providing cycle time guarantees; mold trials and machine demonstrations at the Strongsville (OH), Placentia (CA), El Paso (TX), and Worcester (MA) technical centers; process documentation and technical sales support. email: applicationsgroup@dpg.com

MODERNIZATIONS

Updating and modernizing older injection molding machines makes them more efficient, flexible and productive – with excellent payback and return on investment. e-mail: modernizations@dpg.com

ONLINE STORE

Order parts from our online store where convenience and ease are our main priority. We can accept payment via credit cards or purchase orders. Visit our online store at www.molderactionnetwork.com.

Demag Plastics Group Corp.
11792 Alameda Drive
Strongsville, Ohio 44149 USA
phone: 440.876.8960, fax: 440.876.6423
web: www.dpg.com
e-mail: titan-dc@dpg.com

Since continuous improvement is Demag Plastics Group's policy, we reserve the right to change information without prior notice or obligation.