

IntElect Model 55

Demag Plastics Group		IntElect Model 55		
Model Description		IntElect Model 55		
International Size Description		45	100	150

Clamp Unit				
Clamp Force	U.S. tons kN	55	500	
Clamp Stroke - Max.	in. mm	10.2	260	
Open Daylight - Max.	in. mm	24	610	
Mold Thickness - Min.	in. mm	5.9	150	
Mold Thickness - Max.	in. mm	13.8	350	
Distance Between Tie Bars				
Horizontal	in. mm	13.0	330	
Vertical	in. mm	13.0	330	
Platen Size				
Horizontal (Standard)	in. mm	19.3	490	
Vertical	in. mm	19.7	500	
Tie Bar Diameter	in. mm	1.97	50	
Ejector Data				
Ejector Stroke	in. mm	3.15	80	
Ejector Force	U.S. tons kN	2.8	25	

Injection Unit		45			100			150		
	Measure	A	B	A+	A	B	C	A	B	C
Injection Capacity (GPPS)	oz.	0.4	0.7	0.8	1.2	1.6	2.3	1.6	2.3	3.1
	g	12.3	20.3	23	35	45	66	45	66	89
Injection Capacity	cu. in.	0.8	1.4	1.6	2.4	3.1	4.5	3.1	4.5	6.2
	ccm	13.9	22.9	26	39	51	74	51	74	101
Recovery Rate (GPPS)	oz./sec.	0.04	0.15	0.15	0.24	0.36	0.63	0.36	0.63	0.92
	g/sec	1.1	4.3	4.3	6.7	10.1	17.8	10.1	17.8	26.1
Injection Pressure	psi	40,600	30,500	40,600	37,400	29,100	20,200	40,600	29,300	21,500
	bar	2,800	2,100	2,800	2,580	2,005	1,390	2,800	2,020	1,485
Injection Rate	cu. in./sec.	1.4	2.3	2.3	3.4	4.5	6.4	4.5	6.4	8.8
	ccm/sec	23	38	38	56	73	105	73	105	144
Injection Stroke	in.	3.5	3.5	4.1	4.1	4.1	4.1	4.1	4.1	4.1
	mm	90	90	105	105	105	105	105	105	105
Screw Diameter	in.	0.55	0.71	0.71	0.87	0.98	1.18	0.98	1.18	1.38
	mm	14	18	18	22	25	30	25	30	35
Screw L/D Ratio		20/1	20/1	20/1	20/1	20/1	20/1	20/1	20/1	20/1
Maximum Screw Speed	rpm	500	500	500	500	500	500	500	500	500
Back Pressure Adjust	psi	50-300	50-300	50-300	50-300	50-300	50-300	50-300	50-300	50-300
	bar	3.5-20.7	3.5-20.7	3.5-20.7	3.5-20.7	3.5-20.7	3.5-20.7	3.5-20.7	3.5-20.7	3.5-20.7
Barrel Heating Capacity	kW	4	5	5	5.1	5.7	8.3	5.7	8.3	9.4

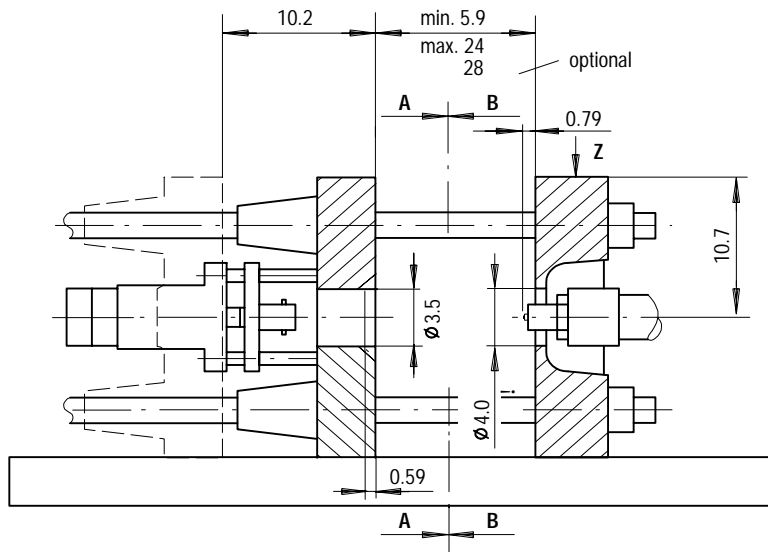
General Machine Specifications		45			100			150		
	Measure									
Length	ft. m	13.0	3.97		13.0	3.97		13.0	3.97	
Width	ft. m	3.9	1.2		3.9	1.2		3.9	1.2	
Height	ft. m	5.9	1.8		5.9	1.8		5.9	1.8	
Machine Weight (approx.)	lb. kg	7,260	3,300		7,260	3,300		7,260	3,300	

Performance specifications are based on theoretical data and mold, material and conditions. Since continuous improvement is Demag Plastics Group's policy, we reserve the right to change specifications, designs and performance data without prior notice or obligation.

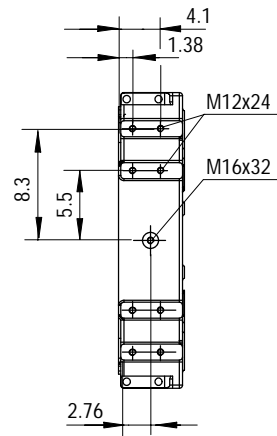
The specifications listed are standard. However, Demag Plastics Group will provide engineered options and solutions to meet virtually any performance requirements.

IntElect Model 55

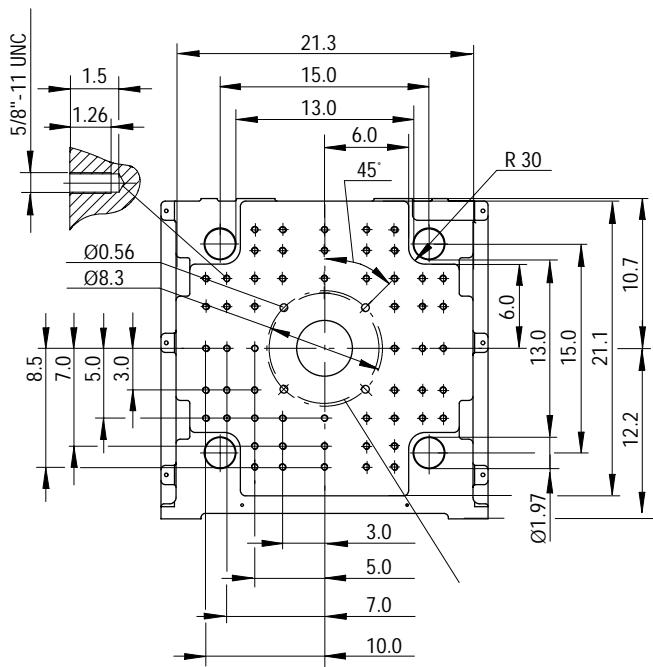
CLAMP ASSEMBLY



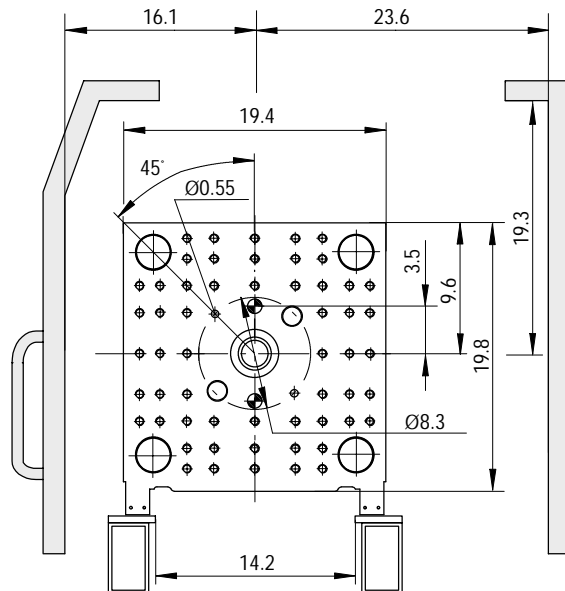
ROBOT MOUNTING PATTERN



STATIONARY PLATEN



MOVABLE PLATEN



Min. mold – 7.9" x 7.9" (200 mm x 200 mm)
 Max. mold weight – 1,290 lbs. (580 kg)
 Max. mold weight on movable platen – 845 lbs. (380 kg)

☉ Bore Ø1.06" (27 mm) through holes

1) Bore Ø0.55" (14 mm) through holes
 and Ø0.79" (20 mm) from opposite side