

## Injection Unit

International Size	Measure	390		500		720	
		Std.	HiPr	Std.	HiPr	Std.	HiPr
Injection Capacity (GPPS)	oz. g	8.11 230	6.21 176	10.74 304	8.48 241	14.69 417	11.9 337
Injection Capacity	cu. in. ccm	14.9 244	11.4 187	19.7 323	15.6 255	27 442	21.8 358
Recovery Rate-Std.	oz./sec. g/sec.	1.04 29.4	0.90 25.5	1.18 33.4	1.04 29.4	1.38 39.0	1.18 33.4
Injection Pressure	psi bar	23,200 1,600	30,300 2,089	23,200 1,600	29,300 2,020	23,200 1,600	28,600 1,972
Injection Rate (@ 10,000psi) (@ 700 bar)	cu. in./sec. ccm/sec.	12.8 210	9.8 161	16.2 266	12.8 210	20.0 328	16.2 266
Injection Stroke	in. mm	7.6 194	7.6 194	8 203	8 203	8.9 225	8.9 225
Screw Diameter	in. mm	1.57 40	1.38 35	1.77 45	1.57 40	1.97 50	1.77 45
Screw L/D Ratio		20/1	20/1	20/1	20/1	20/1	20/1
Maximum Screw Speed	rpm	358	409	318	358	286	318
Back Pressure Adjust	psi bar	50 - 300 3.5 - 20.7	50 - 300 3.5 - 20.7	50 - 300 3.5 - 20.7	50 - 300 3.5 - 20.7	50 - 300 3.5 - 20.7	50 - 300 3.5 - 20.7
Barrel Heating Capacity	kW	11	9.9	10.3	11.1	13.7	10.3

## General Machine Specifications

	Measure	390	500	720
Length	ft. m	18.7 5.7	18.7 5.7	18.7 5.7
Width	ft. m	5.3 1.6	5.3 1.6	5.3 1.6
Height	ft. m	7.2 2.2	7.2 2.2	7.2 2.2
Machine Weight (approx.)	lb. Kg	22,300 10,120	22,300 10,120	22,300 10,120

Performance specifications are based on theoretical data and mold, material and conditions. Since continuous improvement is Van Dorn Demag's policy, we reserve the right to change specifications, designs and performance data without prior notice or obligation.

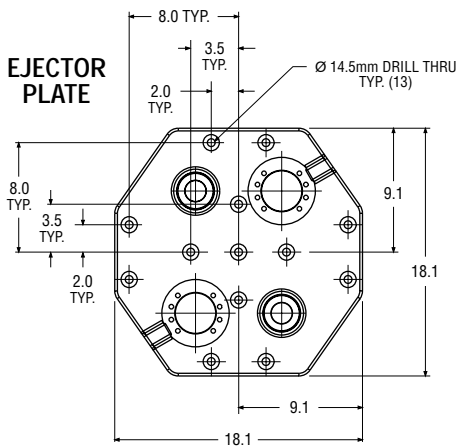
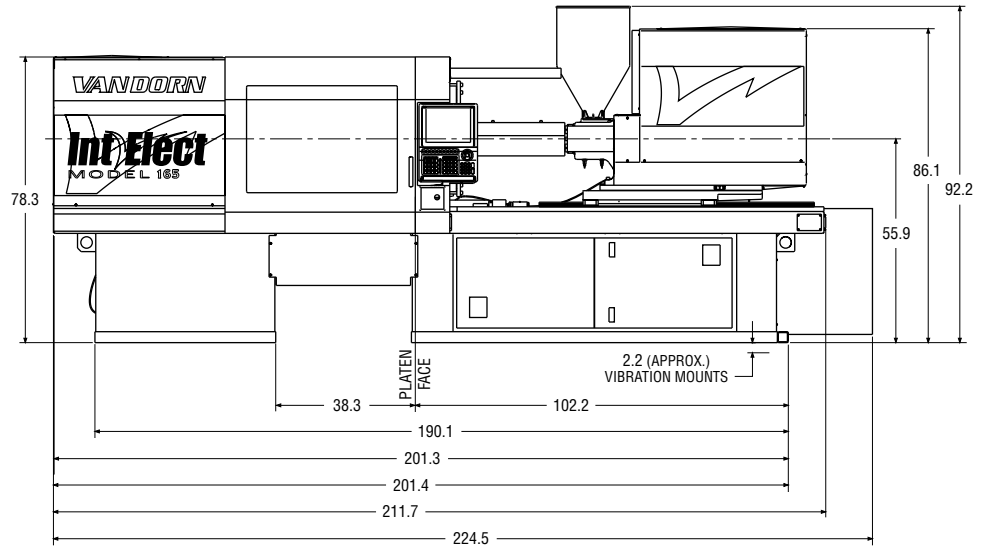
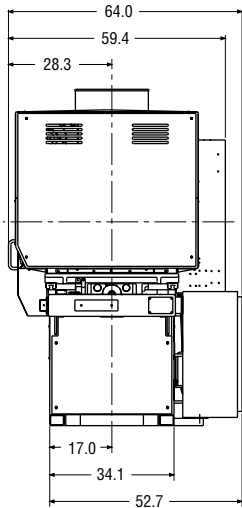
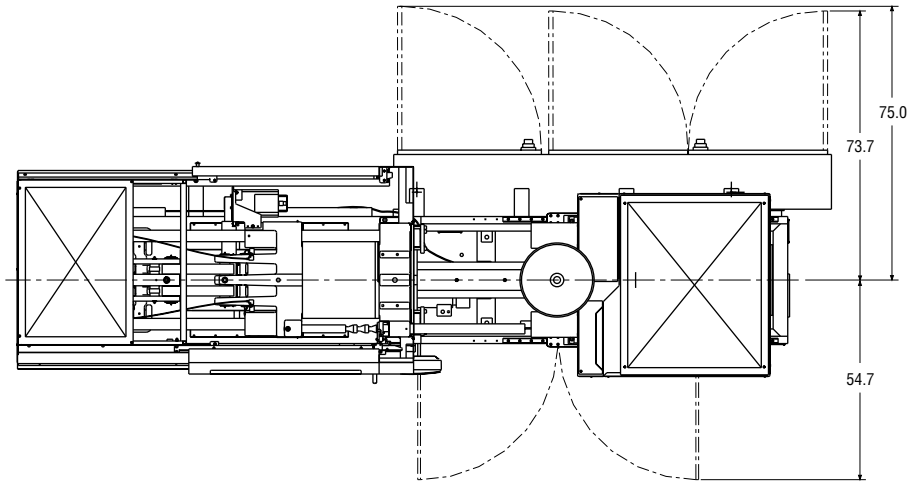
The specifications listed are standard. However, Van Dorn Demag will provide engineered options and solutions to meet virtually any performance requirements.

## Clamp Unit

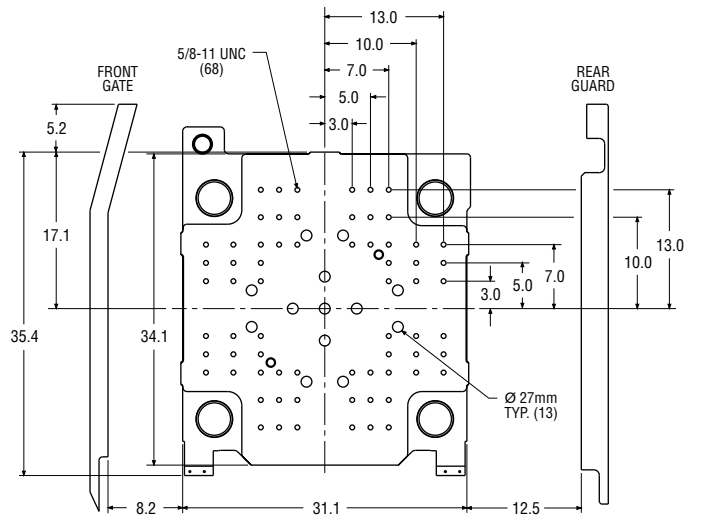
Clamp Force	U.S. tons k N	165 1,467
Clamp Stroke-Max.	in. mm	19.7 500
Open Daylight-Max.	in. mm	40.7 1,034
Mold Thickness-Min.	in. mm	8.8 224
<b>Distance Between Tie Bars</b>		
Horizontal	in. mm	21.0 534
Vertical	in. mm	21.0 534
Tie Bar Diameter	in. mm	3.15 80
<b>Platen Size</b>		
Horizontal	in. mm	31.1 790
Vertical	in. mm	34.1 865
<b>Ejector Data</b>		
Ejector Stroke	in. mm	5.31 135
Ejector Force	U.S. tons k N	4.13 36.6

VANDORN™

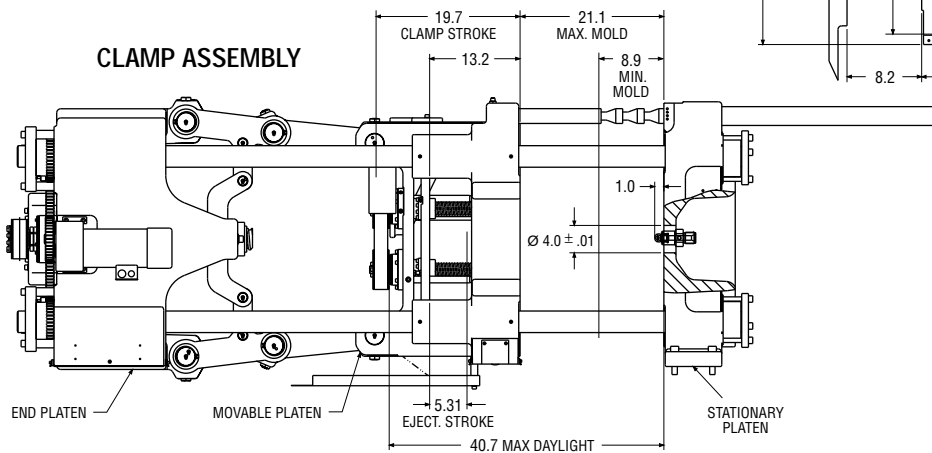
**Int Elect**  
MODEL 165



MOVABLE PLATEN



CLAMP ASSEMBLY



**Demag**Plastics Group  
**VAN DORN**

Van Dorn Demag Corporation  
11792 Alameda Drive  
Strongsville, Ohio 44149 USA  
tel: 440/876.8960  
fax: 440/876.4383  
web: www.vandorndemag.com

6/03/1500  
03.11.004.2