

HT Model 85

Demag Plastics Group			
Model Description		HT Model 85	
International Size Description		130 210	

Clamp Unit			
Clamp Force	U.S. tons	kN	85 757
Clamp Stroke - Max.	in.	mm	12 305
Open Daylight - Max.	in.	mm	28 711
Mold Thickness - Min.	in.	mm	4 102
Distance Between Tie Bars			
Horizontal	in.	mm	16.0 406
Vertical	in.	mm	13.6 345
Platen Size			
Horizontal (Standard)	in.	mm	22.8 579
Vertical	in.	mm	20.4 518
Tie Bar Diameter	in.	mm	2.4 61
Clamp Speeds			
Closing	in./sec.	mm/sec	29 737
Opening	in./sec.	mm/sec	45 1,143
Ejector Force	U.S. tons	kN	4.9 44
Ejector Stroke	in.	mm	3.0 76

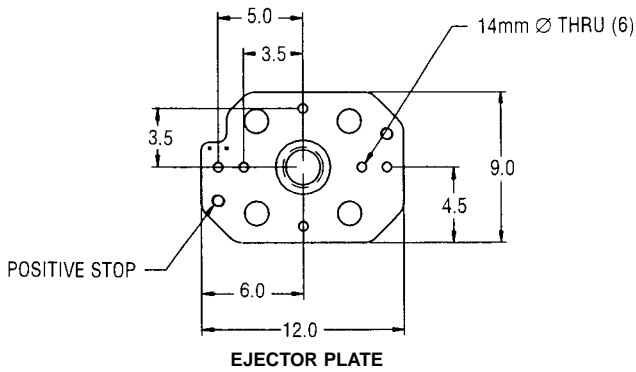
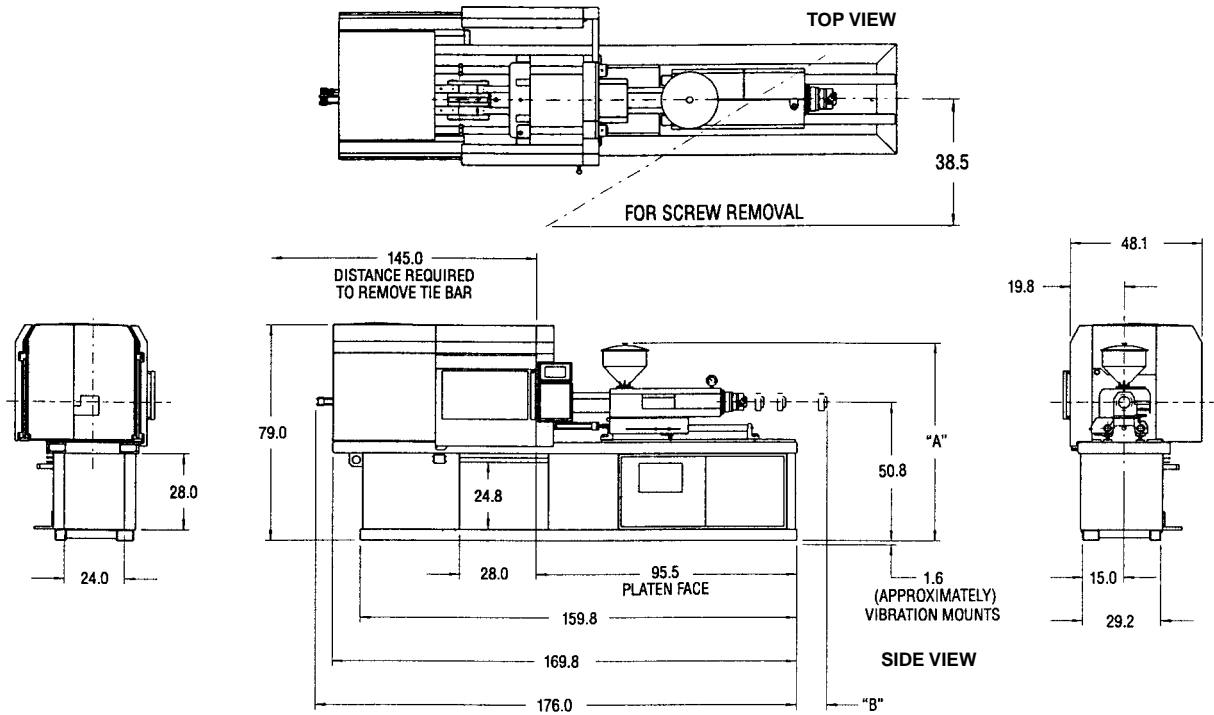
Injection Unit		130		210	
	Measure	Std.	HiPr	Std.	HiPr
Injection Capacity (GPPS)	oz.	3	2.3	5	3.7
	g	90	64	144	106
Injection Capacity	cu. in.	5.8	4.2	9.3	6.8
	ccm	95	68	153	112
Recovery Rate (GPPS)	oz./sec.	0.35	0.24	0.72	0.48
	g/sec	10.0	6.8	20.3	13.6
Injection Pressure	psi	20,161	28,125	20,208	27,505
	bar	1,390	1,939	1,393	1,896
Injection Rate (@ 10,000 psi)	cu. in./sec.	8.4	6.0	8.4	6.1
Injection Rate (@ 700 bar)	ccm/sec	137	99	137	101
Injection Stroke	in.	5.31	5.31	6.25	6.25
	mm	135	135	159	159
Screw Diameter	in.	1.18	1.00	1.38	1.18
	mm	30	25	35	30
Screw L/D Ratio		20/1	20/1	20/1	20/1
Maximum Screw Speed	rpm	320	320	409	435
Back Pressure Adjust	psi	50-300	50-300	50-300	50-300
	bar	5-21	5-21	5-21	5-21
Barrel Heating Capacity	kW	5.6	5.6	8.1	5.6

General Machine Specifications		130		210	
	Measure				
Length	ft. m	14.7	4.5	14.7	4.5
Width	ft. m	4.3	1.3	4.3	1.3
Height	ft. m	6.6	2.0	6.6	2.0
Machine Weight (approx.)	lb. kg	9,500	4,313	9,500	4,313

Performance specifications are based on theoretical data and mold, material and conditions. Since continuous improvement is Demag Plastics Group's policy, we reserve the right to change specifications, designs and performance data without prior notice or obligation.

The specifications listed are standard. However, Demag Plastics Group will provide engineered options and solutions to meet virtually any performance requirements including high-pressure and high-speed configurations.

HT Model 85



Injection Unit	A (in.)	B (in.)
STANDARD BARREL		
3 oz.	72.00	—
5 oz.	72.63	—
VENTED BARREL		
5 oz.	72.63	8.33

Note: Dimensions based on optional hopper.

