

# HT Model 170

Demag Plastics Group	
Model Description	HT Model 170
International Size Description	330 500 720

Clamp Unit		
Clamp Force	U.S. tons kN	170 1,512
Clamp Stroke - Max.	in. mm	17 432
Open Daylight - Max.	in. mm	35 889
Mold Thickness - Min.	in. mm	6 152
Distance Between Tie Bars		
Horizontal	in. mm	20 508
Vertical	in. mm	20 508
Platen Size		
Horizontal (Standard)	in. mm	29 737
Vertical	in. mm	29 737
Tie Bar Diameter	in. mm	3.25 83
Clamp Speeds		
Closing	in./sec. mm/sec	26 660
Opening	in./sec. mm/sec	38 965
Ejector Force	U.S. tons kN	4.9 44
Ejector Stroke	in. mm	4.5 114

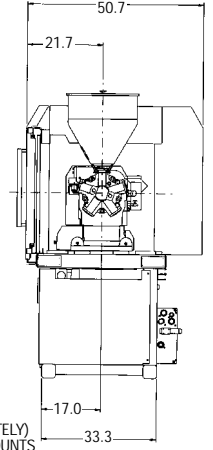
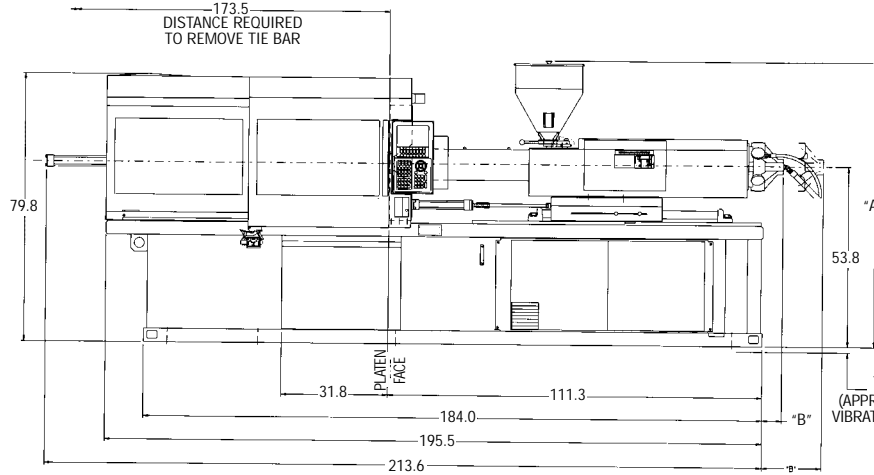
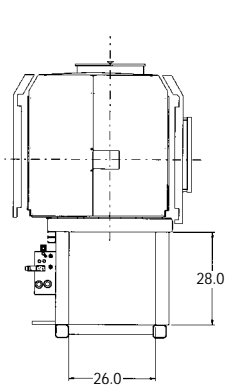
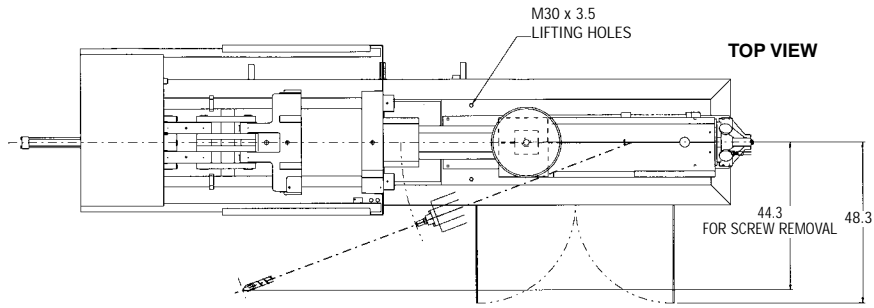
Injection Unit		330		500		720	
	Measure	Std.	HiPr	Std.	HiPr	Std.	HiPr
Injection Capacity (GPPS)	oz.	8	6.2	10.7	8.5	14.7	11.9
	g	229	176	304	241	417	337
Injection Capacity	cu. in.	14.8	11.4	19.7	15.6	27.0	21.8
	ccm	243	186	323	255	442	358
Recovery Rate (GPPS)	oz./sec.	0.82	0.79	1.18	1.37	1.38	1.28
	g/sec	23.3	22.3	33.4	38.8	39.0	36.4
Injection Pressure	psi	19,995	26,115	24,088	30,486	23,757	29,329
	bar	1,379	1,801	1,661	2,102	1,638	2,022
Injection Rate (@ 10,000 psi)	cu. in./Sec.	16.2	12.4	15.6	12.3	15.8	12.8
Injection Rate (@ 700 bar)	ccm/sec	265	203	255	202	259	210
Injection Stroke	in.	7.63	7.63	8.0	8.0	8.9	8.9
	mm	194	194	203	203	225	225
Screw Diameter	in.	1.57	1.38	1.77	1.57	1.97	1.77
	mm	40	35	45	40	50	45
Screw L/D Ratio		20/1	20/1	20/1	20/1	20/1	20/1
Maximum Screw Speed	rpm	358	450	318	472	286	347
Back Pressure Adjust	psi	50-300	50-300	50-300	50-300	50-300	50-300
	bar	5-21	5-21	5-21	5-21	5-21	5-21
Barrel Heating Capacity	kW	8.9	8.1	10.3	9.5	13.7	11.7

General Machine Specifications		330		500		720	
	Measure						
Length	ft. m	17.8	5.7	18.6	5.9	19.3	6.4
Width	ft. m	4.5	1.4	4.5	1.4	4.5	1.4
Height	ft. m	6.6	2.0	6.6	2.0	6.6	2.0
Machine Weight (approx.)	lb. kg	16,800	7,627	16,800	7,627	16,800	7,627

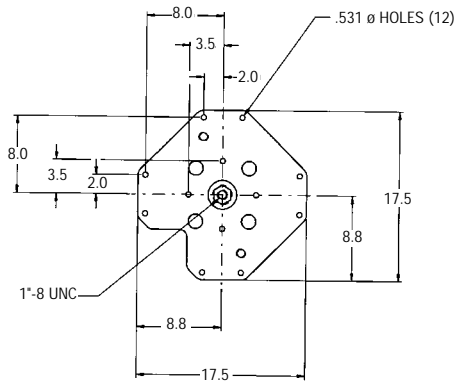
Performance specifications are based on theoretical data and mold, material and conditions. Since continuous improvement is Demag Plastics Group's policy, we reserve the right to change specifications, designs and performance data without prior notice or obligation.

The specifications listed are standard. However, Demag Plastics Group will provide engineered options and solutions to meet virtually any performance requirements including high-pressure and high-speed configurations.

# HT Model 170



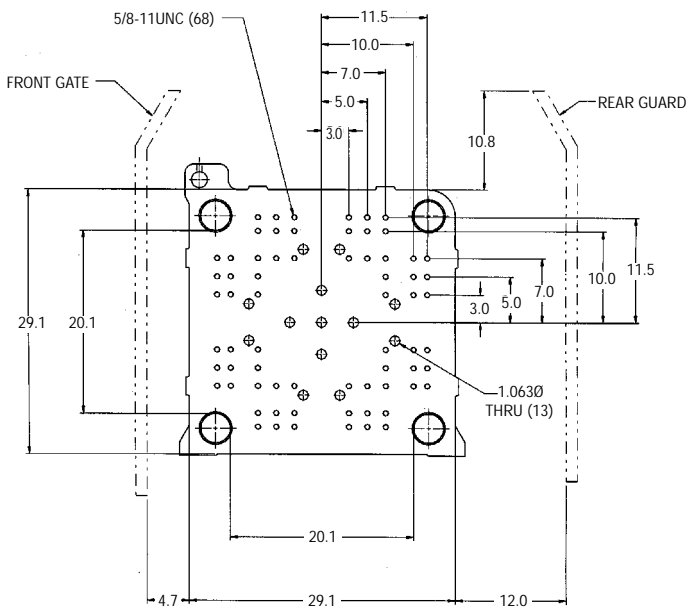
**SIDE VIEW**



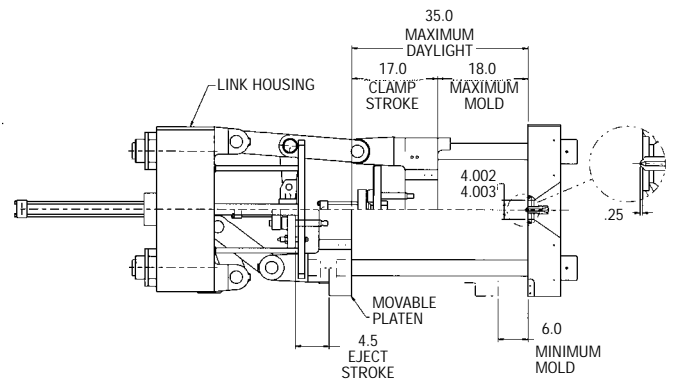
**EJECTOR PLATE**

Injection Unit	A (in.)	B (in.)
<b>STANDARD BARREL</b>		
40mm/8 oz.	83.3	1.1
45mm/500	83.3	9.9
50mm/720	84.5	18.0

Note: Dimensions based on optional hopper.



**MOVABLE PLATEN**



**STATIONARY PLATEN**