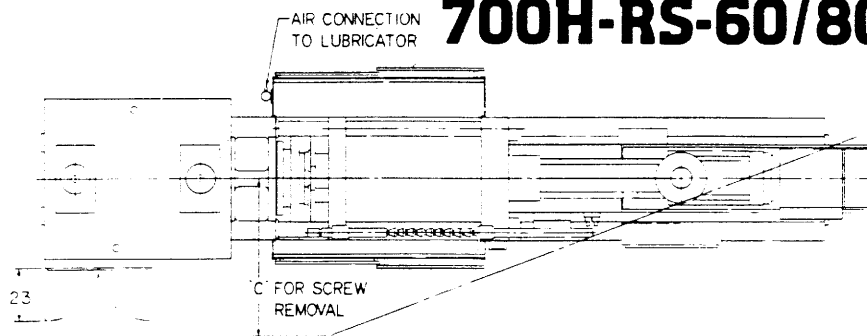
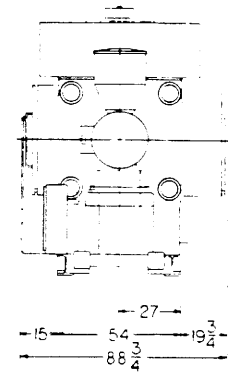
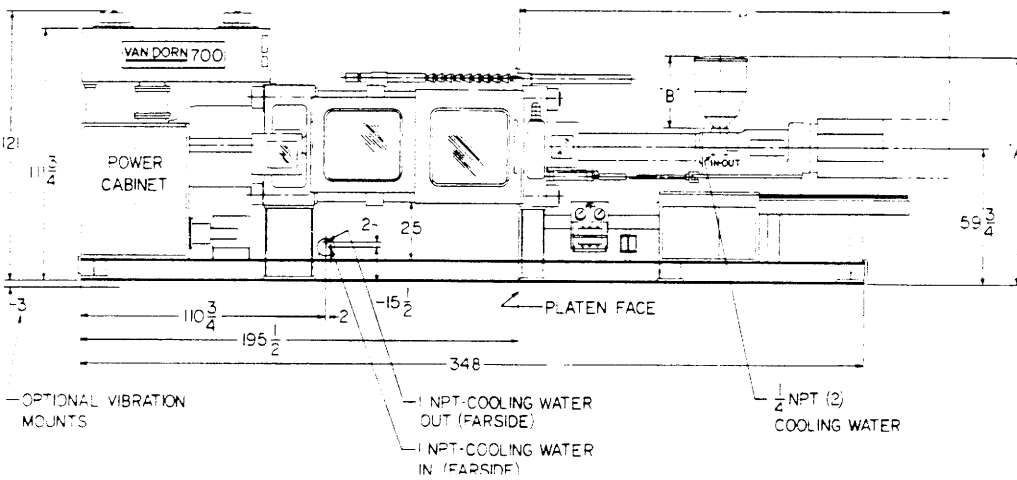


VAN DORN®

HP SERIES-HYDRAULIC CLAMP 700H-RS-60/80/125/165F



MACHINE	STD. BARREL / VENTED BARREL				
	A	B	C	D	D
700H-RS 60F	100	33 1/2	76	181	225
700H-RS 80F	100 1/2	33 1/2	77	187	237
700H-RS 125F	100 1/2	33 1/2	70	204	262
700H-RS 165F	116	48	73	246	301



Injection Unit

	60F	80F	125F	165F
Inject Capacity—Calculated (cu.in.)	111.5	144.2	224.8	298
Inject Capacity—G.P. Polystyrene (Oz.)*	60	80	125	165
Recovery Rate—G.P. PS (oz./sec.)†	3.7	4.5	4.4	4.8
Injection Pressure—Max. (p.s.i.)	20,400	20,100	19,700	20,300
Injection Rate—at 10,000 p.s.i. (cu. in./sec.)	55	56	57	56
Injection Stroke (in.)	14.31	14.62	16.75	18.50
Screw Diameter (in.)	3.15	3.54	4.13	4.53
Barrel L/D Ratio	20:1	20:1	20:1	20:1
Screw Speed Range (R.P.M.)	20-250	20-236	20-160††	20-125
Back Pressure Adjust. (screw rotating—p.s.i.)	75-300	75-300	75-300	75-300

General Specifications

	60F	80F	125F	165F
Pump Motors	2	2	2	2
Total H.P. (hydraulic system)	75+50	75+50	75+50	75+50
System Pressure (Inject/Clamp p.s.i.)	2000/2500	2000/2500	2000/2500	2000/2500
Total Heating Wattage (KW)	28.3	36.9	52.7	62.4
Number of Heat Control Zones	4	4	4	4
Combined Pump Capacity (G.P.M. @ 100 p.s.i.)	191	191	191	191
Oil Capacity (Gal.)	540	540	540	540
Hopper Capacity (Lb.)	225	225	225	500
Machine Weight (Lb. approx.)	80,500	81,500	82,000	84,500

Clamping Unit

Clamp Force (tons)	700
Clamp Opening Force (tons)	31
Clamp Stroke—Max. (in.)	44
Open Daylight—Max. (in.) with Ejector Box (& spacers) removed	72.75**
Mold Thickness—Min. (in.) with Ejector Box (& spacers) installed	16**
Ejector Box Thickness (in.)	12.75
Ram Spacer Thickness (in.)	Optional
Platen Size—Standard—H & V (in.)	53.5x53.5
Dist. Between Tierods—Standard—HxV (in.)	36.5x36.5
Dist. between Tierods—Optional—HxV (in.)	45x36.5
Tierod Diameter (in.)	6.5
Clamp Speeds: (in./sec.)	
Closing Fast	29
Closing Slow (Adjustable)	4
Opening Fast	25
Opening Slow	6
Ejector Force (tons)	12.5
Ejector Stroke (in.)	6
Ejector Speed (in./sec.)	
Forward (adjustable)	7
Retract	10

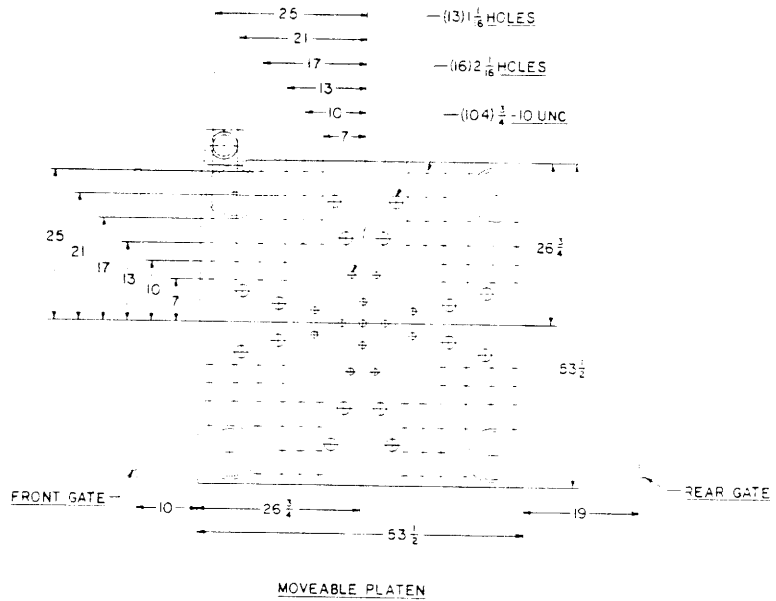
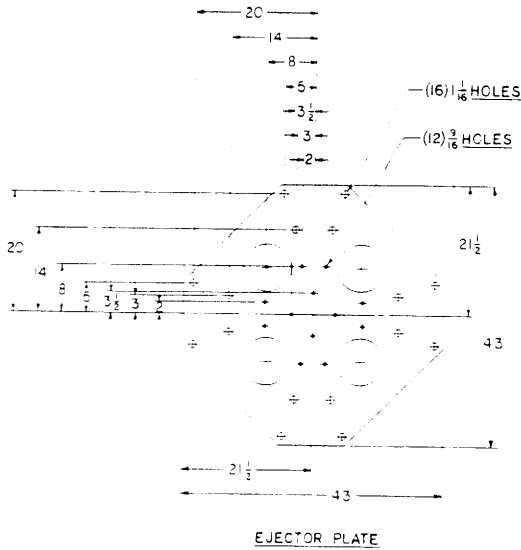
Since continuous improvement is Van Dorn's policy, we reserve the right to change specifications, designs and performance data without prior notice or obligation.

* Dependent upon mold, material and conditions.

† Average value based on S.P.I. test procedures.

†† Higher torque motor available with lower R.P.M. and recovery rate.

** Extended Tie Bar Spacing Option reduces minimum mold thickness and maximum open daylight by 1 1/2"



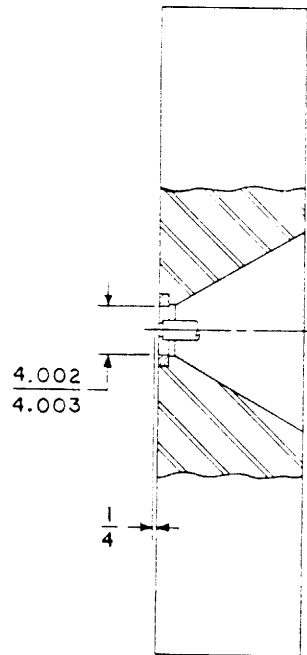
VOOH-RS-60/80/125/165F

The Van Dorn HP Series is a line of versatile high-performance hydraulic clamp injection molding machines. They offer as standard equipment features normally supplied as extra-cost options by other manufacturers. These features reduce set-up time, increase molding performance and provide new standards of operational safety.

Add Van Dorn's industry-wide reputation for machine dependability and you have what it takes to make molding profitable.

STANDARD FEATURES

- High injection rates
- Large part removal clearance
- Full SPI pattern hydraulic ejector
- Boost cut-off limit switch
- Rugged heavy-duty clamp
- Vibration and hydraulic isolation for quiet operation
- Purge guard with interlock
- Swing-away material hopper.



STATIONARY PLATEN

VAN DORN®

Committed to the future of plastics

VAN DORN PLASTIC MACHINERY CO., | A Division of Van Dorn Company

11792 Alameda Dr. • Strongsville, Ohio 44136 • Write: P.O. Box 8849 • Strongsville, Ohio 44136 • Telephone: (216) 238-8960 • Telex: 980667

Effective October, 1989 • Litho in U.S.A.