

# VAN DORN®

## 25 ET SERIES

### Injection Unit

	Measure	25-1.8 ounce			25-2.9 ounce		
		Std. 250-80	HiPr 250-80	XHiPr 250-80	Std. 250-120	HiPr 250-120	XHiPr 250-120
International Size							
Injection Capacity (GPPS)	oz. g	1.8 51	1.4 39	0.8 22	2.9 83	2.0 57	1.4 39
Injection Capacity	cu. in. ccm	3.3 54	2.6 42	1.4 23	5.4 88	3.7 61	2.6 42
Recovery Rate (GPPS)	oz./sec. g/sec	0.32 9.2	0.22 6.1	0.15 4.3	0.35 10.0	0.26 7.3	0.17 4.8
Injection Pressure	psi bar	23,061 1,590	29,878 2,060	34,809 2,400	20,160 1,390	29,007 2,000	34,809 2,400
Injection Rate (@ 10,000 psi) (@ 700 bar)	oz./sec. g/sec	2.3 64	1.7 49	1.2 33	2.6 73	1.8 51	1.4 39
Injection Stroke	in. mm	4.33 110	4.33 110	3.54 90	4.92 125	4.92 125	4.33 110
Screw Diameter	in. mm	0.98 25	0.87 22	0.71 18	1.18 30	0.98 25	0.87 22
Screw L/D Ratio		20/1 20/1	20/1 20/1	20/1 20/1	20/1 20/1	20/1 20/1	20/1 20/1

### General Machine Specifications

	Measure	25-1.8 ounce	25-2.9 ounce
Pump Motor	hp kW	10 7.5	10 7.5
Oil Capacity	gal. l	44 165	44 165
Machine Weight (approx.)	lb. kg	4,630 2,100	4,740 2,150
<b>Machine Dimensions</b>			
Length	ft. m	10.2 3.1	10.2 3.1
Width	ft. m	4.2 1.3	4.2 1.3
Height	ft. m	5.6 1.7	5.6 1.7

Performance specifications are based on theoretical data and mold, material and conditions. Since continuous improvement is Van Dorn Demag's policy, we reserve the right to change specifications, designs and performance data without prior notice or obligation.

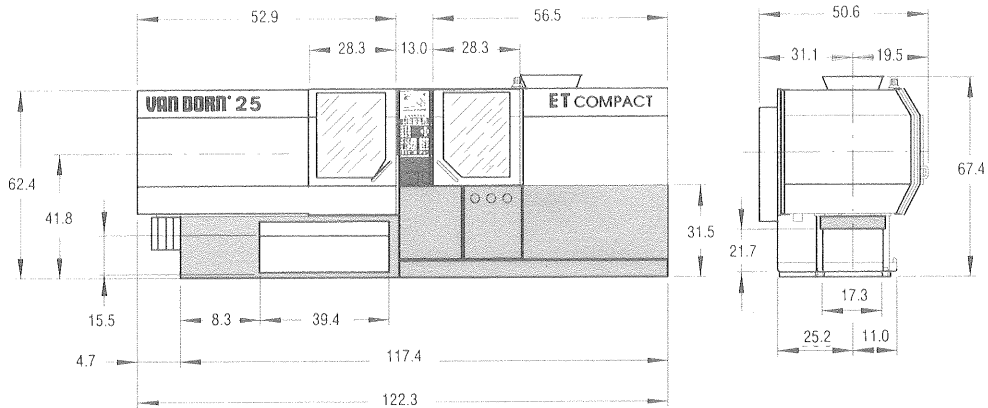
The specifications listed are standard. However, Van Dorn Demag will provide engineered options and solutions to meet virtually any performance requirements including high-torque and high-speed configurations.

### Clamp Unit

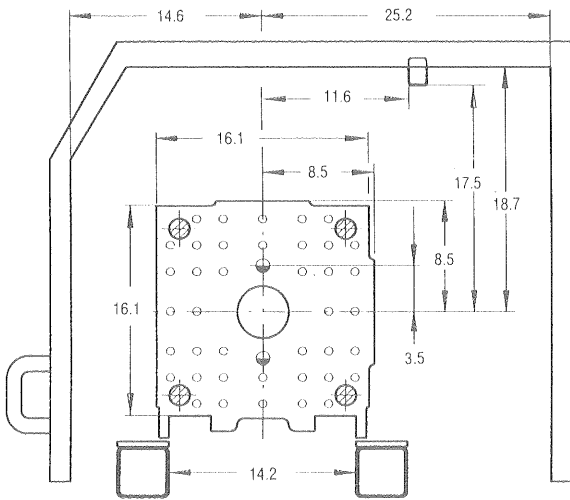
Clamp Force	US tons kN	28 250
Clamp Stroke - Max.	in. mm	12.4 315
Open Daylight - Max.	in. mm	18.7 475
Mold Thickness - Min.	in. mm	6.3 160
<b>Distance Between Tie Bars</b>		
Horizontal	in. mm	11.0 280
Vertical	in. mm	11.0 280
<b>Platen Size</b>		
Horizontal	in. mm	16.1 410
Vertical	in. mm	16.1 410
<b>Ejector</b>		
Ejector Force	US tons kN	2.9 26
Ejector Stroke	in. mm	3.9 100

# VAN DORN®

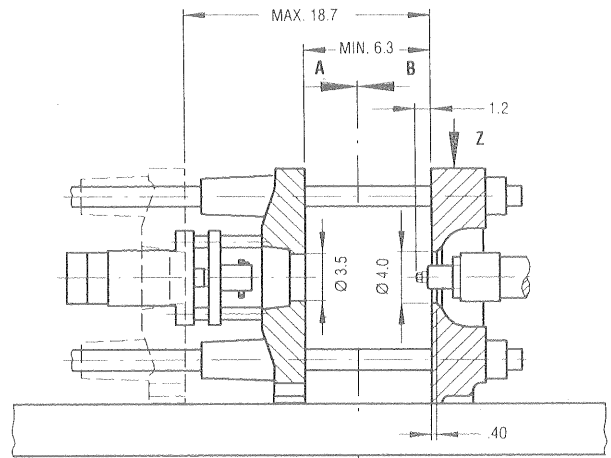
## 25 ET SERIES



B - B



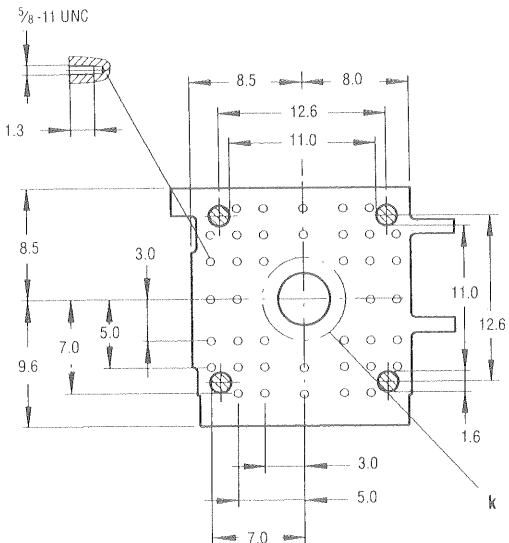
MOVABLE PLATEN



MOLD SPACING

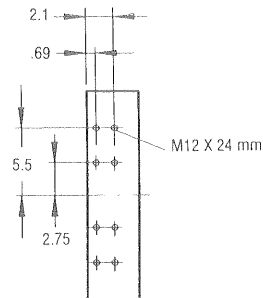
A - A

⌀ Diameter of bore 1.1 inches throughout  
 k = smallest permissible mold ⌀ 6.3 inches



STATIONARY PLATEN

Z



ROBOT MOUNTING PATTERN

# VAN DORN DEMAG®

Van Dorn Demag Corporation  
 11792 Alameda Drive  
 Strongsville, Ohio 44136 USA  
 tel: 440/876.8960  
 fax: 440/876.4383  
 web: www.vandorn.com

# VAN DORN®

## 35 ET SERIES

### Injection Unit

	Measure	35-1.8 ounce			35-2.9 ounce			35-4.8 ounce		
		Std. 350-80	HiPr 350-80	XHiPr 350-80	Std. 350-120	HiPr 350-120	XHiPr 350-120	Std. 350-200	HiPr 350-200	XHiPr 350-200
International Size										
Injection Capacity (GPPS)	oz. g	1.8 51	1.4 39	0.8 22	2.9 83	2.0 57	1.4 39	4.8 135	3.5 100	2.0 57
Injection Capacity	cu. in. ccm	3.3 54	2.6 42	1.4 23	5.4 88	3.7 61	2.6 42	8.8 144	6.5 106	3.7 61
Recovery Rate (GPPS)	oz./sec. g/sec	0.46 13.0	0.32 9.0	0.22 6.3	0.53 15.0	0.35 10.0	0.25 7.2	0.63 18.0	0.42 12.0	0.30 8.5
Injection Pressure	psi bar	23,061 1,590	29,878 2,060	34,809 2,400	20,160 1,390	29,007 2,000	34,809 2,400	21,175 1,460	28,862 1,990	34,809 2,400
Injection Rate (@ 10,000 psi) (@ 700 bar)	oz./sec. g/sec	3.3 93	2.5 72	1.7 48	3.8 107	2.6 74	2.0 57	3.6 102	2.6 74	1.8 51
Injection Stroke	in. mm	4.33 110	4.33 110	3.54 90	4.92 125	4.92 125	4.33 110	5.91 150	5.91 150	4.92 125
Screw Diameter	in. mm	0.98 25	0.87 22	0.71 18	1.18 30	0.98 25	0.87 22	1.38 35	1.18 30	0.98 25
Screw L/D Ratio		20/1 20/1	20/1 20/1	20/1 20/1	20/1 20/1	20/1 20/1	20/1 20/1	20/1 20/1	20/1 20/1	20/1 20/1

### General Machine Specifications

	Measure	35-1.8 oz	35-2.9 oz	35-4.8 oz
Pump Motor	hp	15	15	15
	kW	11	11	11
Oil Capacity	gal.	44	44	44
	l	165	165	165
Machine Weight (approx.)	lb.	4,630	4,740	4,850
	kg	2,100	2,150	2,200
<b>Machine Dimensions</b>				
Length	ft.	10.2	10.2	10.2
	m	3.1	3.1	3.1
Width	ft.	4.2	4.2	4.2
	m	1.3	1.3	1.3
Height	ft.	5.6	5.6	5.6
	m	1.7	1.7	1.7

Performance specifications are based on theoretical data and mold, material and conditions. Since continuous improvement is Van Dorn Demag's policy, we reserve the right to change specifications, designs and performance data without prior notice or obligation.

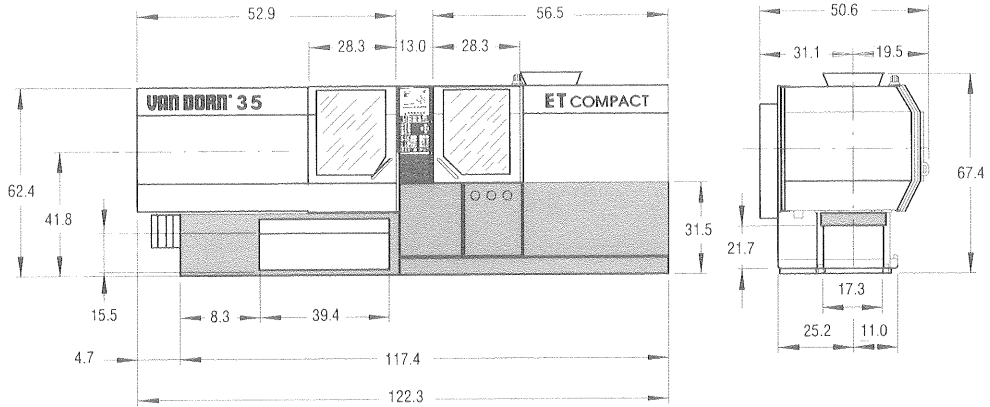
The specifications listed are standard. However, Van Dorn Demag will provide engineered options and solutions to meet virtually any performance requirements including high-torque and high-speed configurations.

### Clamp Unit

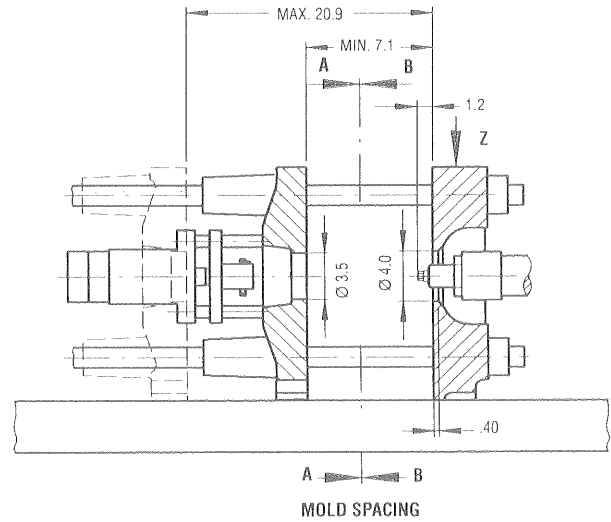
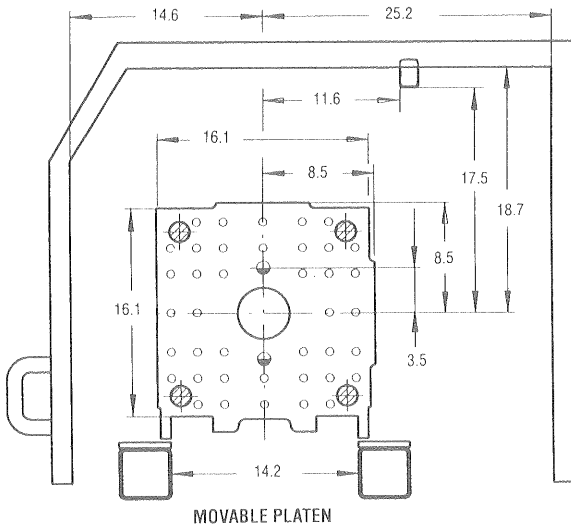
Clamp Force	US tons kN	39 350
Clamp Stroke - Max.	in. mm	13.8 350
Open Daylight - Max.	in. mm	20.9 530
Mold Thickness - Min.	in. mm	7.1 180
<b>Distance Between Tie Bars</b>		
Horizontal	in. mm	11.0 280
Vertical	in. mm	11.0 280
<b>Platen Size</b>		
Horizontal	in. mm	16.1 410
Vertical	in. mm	16.1 410
<b>Ejector</b>		
Ejector Force	US tons kN	2.9 26
Ejector Stroke	in. mm	3.9 100

# VAN DORN®

## 35 ET SERIES

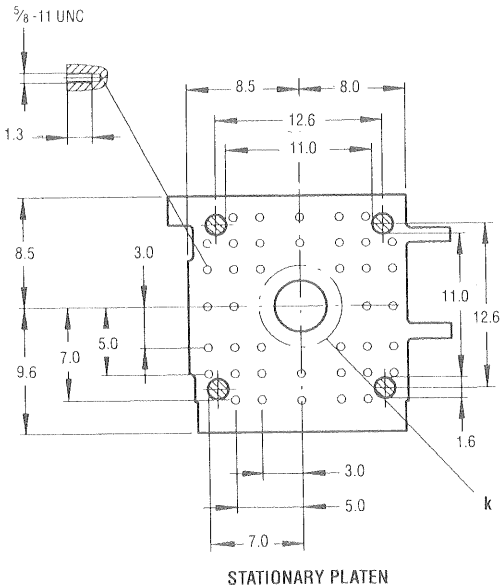


B - B

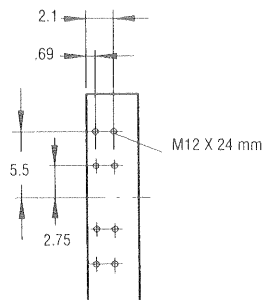


⌀ Diameter of bore 1.1 inches throughout  
 k = smallest permissible mold Ø 7.1 inches

A - A



Z



# VAN DORN DEMAG®

Van Dorn Demag Corporation  
 11792 Alameda Drive  
 Strongsville, Ohio 44136 USA  
 tel: 440/876.8960  
 fax: 440/876.4383  
 web: www.vandorn.com

# VAN DORN®

## 50 ET SERIES

### Injection Unit

	Measure	50-2.9 ounce			50-4.8 ounce			50-7.3 ounce		
		Std. 500-120	HiPr 500-120	XHiPr 500-120	Std. 500-200	HiPr 500-200	XHiPr 500-200	Std. 500-310	HiPr 500-310	XHiPr 500-310
International Size										
Injection Capacity (GPPS)	oz.	2.9	2.0	1.4	4.8	3.5	2.0	7.3	5.6	3.5
	g	83	57	39	135	100	57	207	158	100
Injection Capacity	cu. in.	5.4	3.7	2.6	8.8	6.5	3.7	13.4	10.3	6.5
	ccm	88	61	42	144	106	61	220	168	106
Recovery Rate (GPPS)	oz./sec.	0.78	0.49	0.35	0.95	0.63	0.42	1.06	0.71	0.46
	g/sec	22	14	10	27	18	12	30	20	13
Injection Pressure	psi	20,160	29,007	34,809	21,175	28,862	34,809	22,481	29,297	34,809
	bar	1,390	2,000	2,400	1,460	1,990	2,400	1,550	2,020	2,400
Injection Rate (@ 10,000 psi) (@ 700 bar)	oz./sec.	5.2	3.6	2.8	4.9	3.6	2.5	4.7	3.6	2.6
	g/sec	147	102	79	140	102	71	132	101	73
Injection Stroke	in.	4.92	4.92	4.33	5.91	5.91	4.92	6.89	6.89	5.91
	mm	125	125	110	150	150	125	175	175	150
Screw Diameter	in.	1.18	0.98	0.87	1.38	1.18	0.98	1.57	1.38	1.18
	mm	30	25	22	35	30	25	40	35	30
Screw L/D Ratio		20/1	20/1	20/1	20/1	20/1	20/1	20/1	20/1	20/1
		20/1	20/1	20/1	20/1	20/1	20/1	20/1	20/1	20/1

### General Machine Specifications

	Measure	50-2.9 oz.	50-4.8 oz.	50-7.3 oz.
Pump Motor	hp	20	20	20
	kW	15	15	15
Oil Capacity	gal.	53	53	53
	l	200	200	200
Machine Weight (approx.)	lb.	6,280	6,390	6,500
	kg	2,850	2,900	2,950
<b>Machine Dimensions</b>				
Length	ft.	11.6	11.6	11.6
	m	3.5	3.5	3.5
Width	ft.	4.4	4.4	4.4
	m	1.3	1.3	1.3
Height	ft.	5.8	5.8	5.8
	m	1.8	1.8	1.8

Performance specifications are based on theoretical data and mold, material and conditions. Since continuous improvement is Van Dorn Demag's policy, we reserve the right to change specifications, designs and performance data without prior notice or obligation.

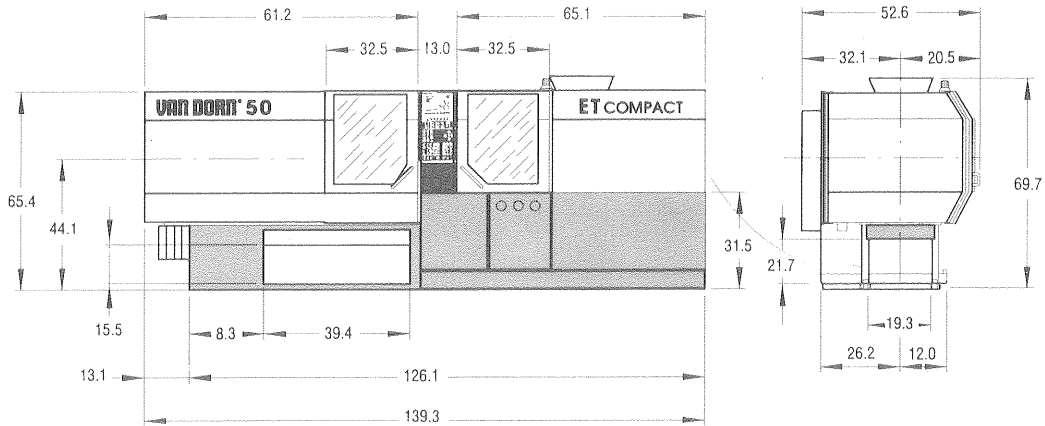
The specifications listed are standard. However, Van Dorn Demag will provide engineered options and solutions to meet virtually any performance requirements including high-torque and high-speed configurations.

### Clamp Unit

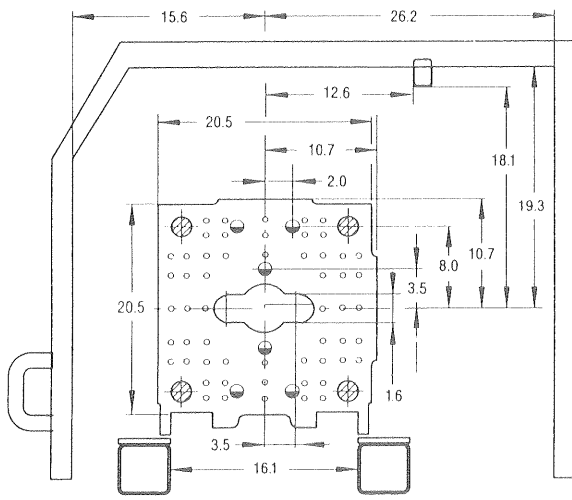
Clamp Force	US tons	56
	kN	500
Clamp Stroke - Max.	in.	15.7
	mm	400
Open Daylight - Max.	in.	24.0
	mm	610
Mold Thickness - Min.	in.	8.3
	mm	210
<b>Distance Between Tie Bars</b>		
Horizontal	in.	14.0
	mm	355
Vertical	in.	14.0
	mm	355
<b>Platen Size</b>		
Horizontal	in.	20.5
	mm	520
Vertical	in.	20.5
	mm	520
<b>Ejector</b>		
Ejector Force	US tons	4.6
	kN	41
Ejector Stroke	in.	4.9
	mm	125

# VAN DORN®

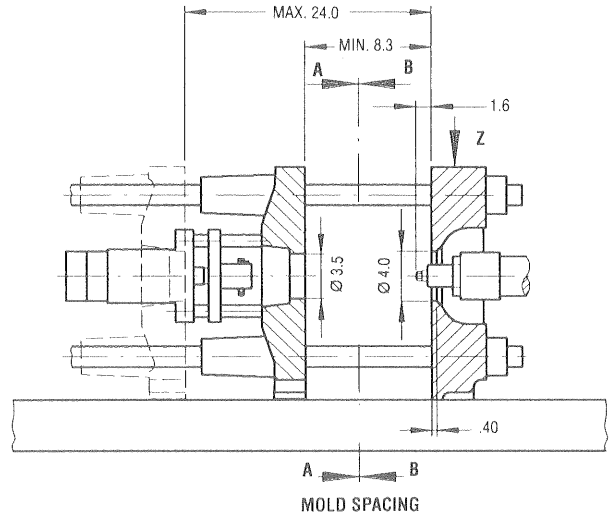
## 50 ET SERIES



B - B

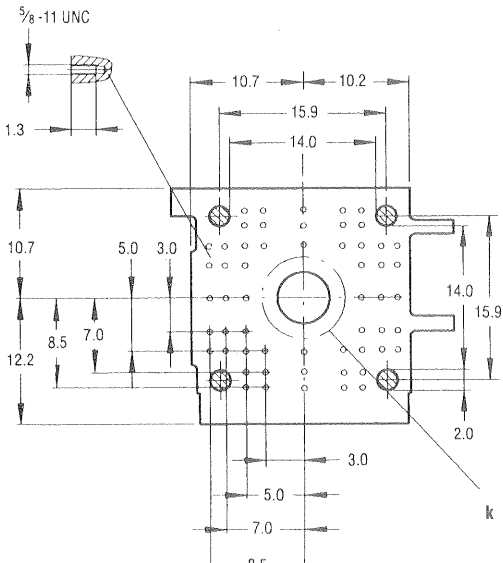


MOVABLE PLATEN



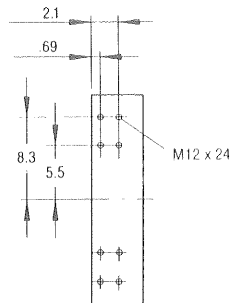
MOLD SPACING

⌀ Diameter of bore 1.1 inches throughout  
 k = smallest permissible mold Ø 7.9 inches



STATIONARY PLATEN

Z



ROBOT MOUNTING PATTERN

### VAN DORN DEMAG®

Van Dorn Demag Corporation  
 11792 Alameda Drive  
 Strongsville, Ohio 44136  
 Telephone (440) 876-8960  
 FAX (440) 876-4383  
 Web: www.vandorn.com



# VAN DORN®

## 80 ET SERIES

### Injection Unit

	Measure	80-4.8 ounce			80-7.3 ounce			80-9.7 ounce		
		Std. 800-200	HiPr 800-200	XHiPr 800-200	Std. 800-310	HiPr 800-310	XHiPr 800-310	Std. 800-430	HiPr 800-430	XHiPr 800-430
International Size										
Injection Capacity (GPPS)	oz.	4.8	3.5	2.0	7.3	5.6	3.5	9.7	7.7	5.6
	g	135	100	57	207	158	100	275	217	158
Injection Capacity	cu. in.	8.8	6.5	3.7	13.4	10.3	6.5	17.9	14.1	10.3
	ccm	144	106	61	220	168	106	293	231	168
Recovery Rate (GPPS)	oz./sec.	1.13	0.74	0.49	1.23	0.85	0.56	1.27	0.99	0.71
	g/sec	32	21	14	35	24	16	36	28	20
Injection Pressure	psi	21,175	28,862	34,809	22,481	29,297	34,809	23,206	29,297	34,809
	bar	1,460	1,990	2,400	1,550	2,020	2,400	1,600	2,020	2,400
Injection Rate (@ 10,000 psi) (@ 700 bar)	oz./sec.	6.1	4.4	3.1	5.7	4.4	3.2	5.5	4.4	3.4
	g/sec	172	126	87	162	124	91	157	124	95
Injection Stroke	in.	5.91	5.91	4.92	6.89	6.89	5.91	7.24	7.24	6.89
	mm	150	150	125	175	175	150	184	184	175
Screw Diameter	in.	1.38	1.18	0.98	1.57	1.38	1.18	1.77	1.57	1.38
	mm	35	30	25	40	35	30	45	40	35
Screw L/D Ratio		20/1	20/1	20/1	20/1	20/1	20/1	20/1	20/1	20/1
		20/1	20/1	20/1	20/1	20/1	20/1	20/1	20/1	20/1

### General Machine Specifications

	Measure	80-4.8 oz.	80-7.3 oz.	80-9.7 oz.
Pump Motor	hp	25	25	25
	kW	18.5	18.5	18.5
Oil Capacity	gal.	53	53	53
	l	200	200	200
Machine Weight (approx.)	lb.	7,830	7,940	8,050
	kg	3,550	3,600	3,650
<b>Machine Dimensions</b>				
Length	ft.	12.7	12.7	12.7
	m	3.9	3.9	3.9
Width	ft.	4.6	4.6	4.6
	m	1.4	1.4	1.4
Height	ft.	5.9	5.9	5.9
	m	1.8	1.8	1.8

Performance specifications are based on theoretical data and mold, material and conditions. Since continuous improvement is Van Dorn Demag's policy, we reserve the right to change specifications, designs and performance data without prior notice or obligation.

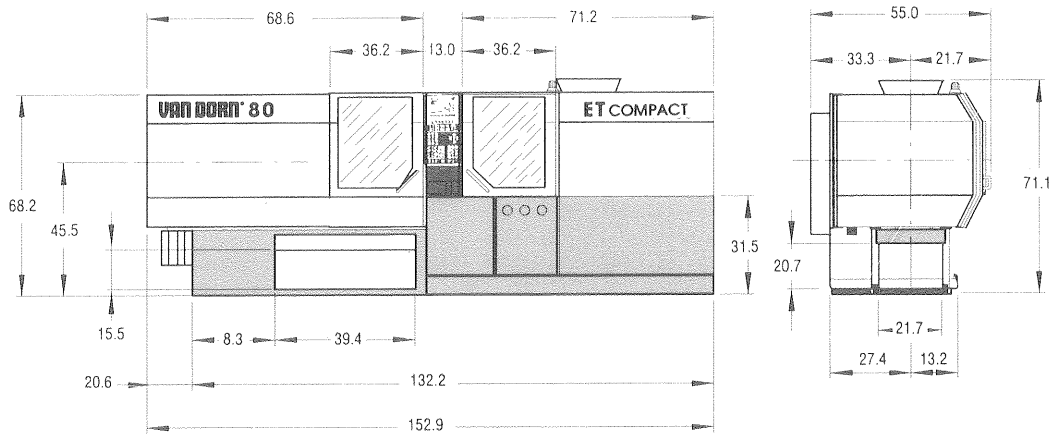
The specifications listed are standard. However, Van Dorn Demag will provide engineered options and solutions to meet virtually any performance requirements including high-torque and high-speed configurations.

### Clamp Unit

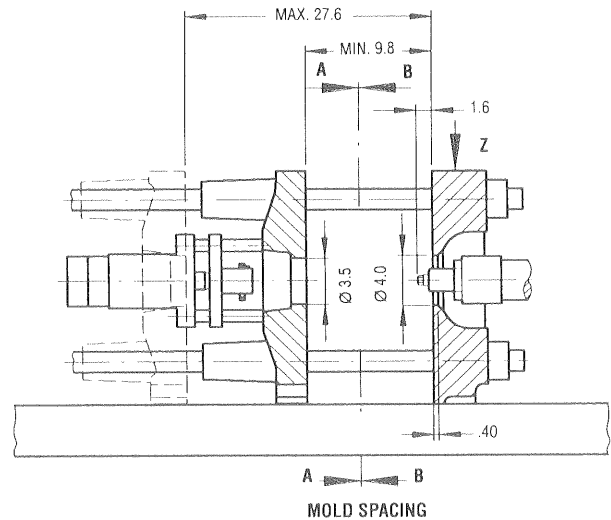
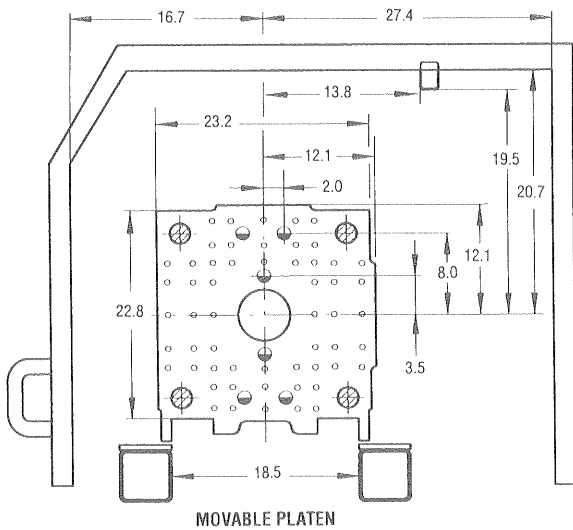
Clamp Force	US tons	90
	kN	800
Clamp Stroke - Max.	in.	17.7
	mm	450
Open Daylight - Max.	in.	27.6
	mm	700
Mold Thickness - Min.	in.	9.8
	mm	250
<b>Distance Between Tie Bars</b>		
Horizontal	in.	15.7
	mm	400
Vertical	in.	15.7
	mm	400
<b>Platen Size</b>		
Horizontal	in.	23.2
	mm	590
Vertical	in.	22.8
	mm	580
<b>Ejector</b>		
Ejector Force	US tons	4.6
	kN	41
Ejector Stroke	in.	5.9
	mm	150

# VAN DORN®

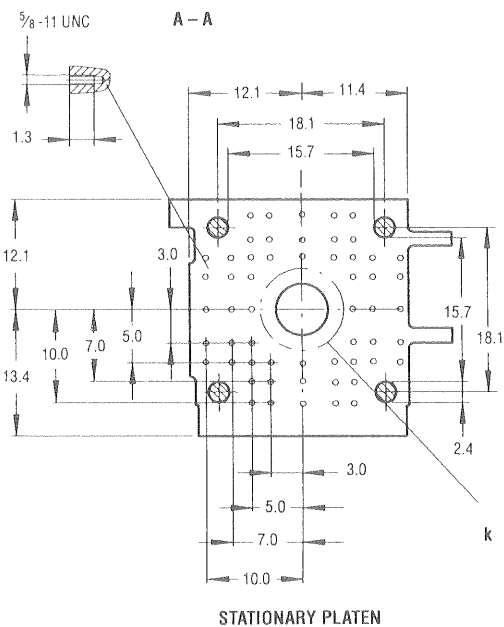
## 80 ET SERIES



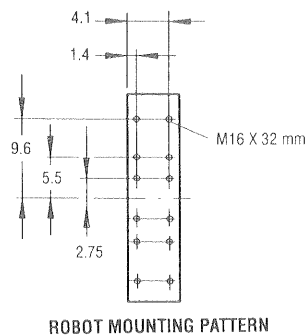
B - B



⌀ Diameter of bore 1.1 inches throughout  
 k = smallest permissible mold ⌀ 8.5 inches



Z



**VAN DORN DEMAG®**

Van Dorn Demag Corporation  
 11792 Alameda Drive  
 Strongsville, Ohio 44136 USA  
 tel: 440/876.8960  
 fax: 440/876.4383  
 web: www.vandorn.com



# VAN DORN®

## 100 ET SERIES

### Injection Unit

	Measure	100-7.3 ounce			100-9.7 ounce		
		Std. 1000-310	HiPr 1000-310	XHiPr 1000-310	Std. 1000-430	HiPr 1000-430	XHiPr 1000-430
International Size							
Injection Capacity (GPPS)	oz.	7.3	5.6	3.5	9.7	7.7	5.6
	g	207	158	100	275	217	158
Injection Capacity	cu. in.	13.4	10.3	6.5	17.9	14.1	10.3
	ccm	220	168	106	293	231	168
Recovery Rate (GPPS)	oz./sec.	1.66	1.16	0.78	1.66	1.31	0.92
	g/sec	47	33	22	47	37	26
Injection Pressure	psi	22,481	29,297	34,809	23,206	29,297	34,809
	bar	1,550	2,020	2,400	1,600	2,020	2,400
Injection Rate (@ 10,000 psi) (@ 700 bar)	oz./sec.	7.4	5.6	4.1	7.2	5.6	4.3
	g/sec	210	160	117	203	160	122
Injection Stroke	in.	6.89	6.89	5.91	7.24	7.24	6.89
	mm	175	175	150	184	184	175
Screw Diameter	in.	1.57	1.38	1.18	1.77	1.57	1.38
	mm	40	35	30	45	40	35
Screw L/D Ratio		20/1	20/1	20/1	20/1	20/1	20/1
		20/1	20/1	20/1	20/1	20/1	20/1

### General Machine Specifications

	Measure	100-7.3 oz.	100-9.7 oz.
Pump Motor	hp	30	30
	kW	22	22
Oil Capacity	gal.	53	53
	l	200	200
Machine Weight (approx.)	lb.	8,050	8,160
	kg	3,650	3,700
<b>Machine Dimensions</b>			
Length	ft.	13.6	13.6
	m	4.2	4.2
Width	ft.	4.6	4.6
	m	1.4	1.4
Height	ft.	5.9	5.9
	m	1.8	1.8

Performance specifications are based on theoretical data and mold, material and conditions. Since continuous improvement is Van Dorn Demag's policy, we reserve the right to change specifications, designs and performance data without prior notice or obligation.

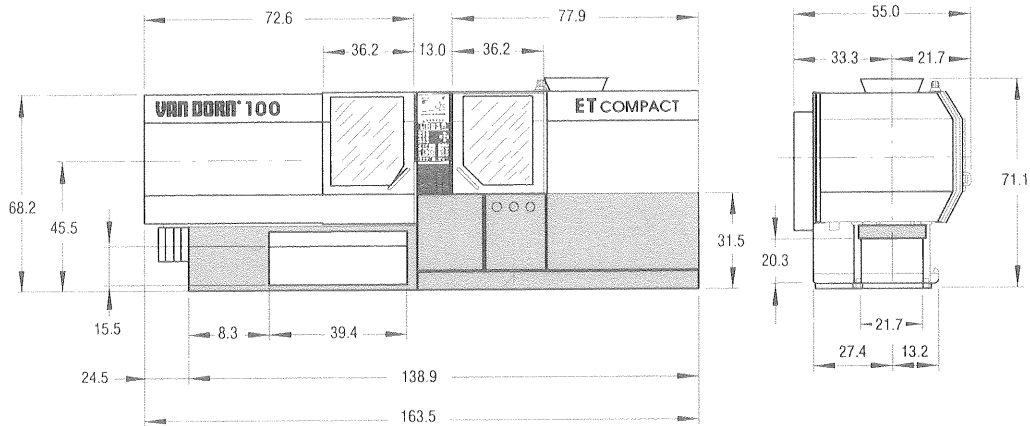
The specifications listed are standard. However, Van Dorn Demag will provide engineered options and solutions to meet virtually any performance requirements including high-torque and high-speed configurations.

### Clamp Unit

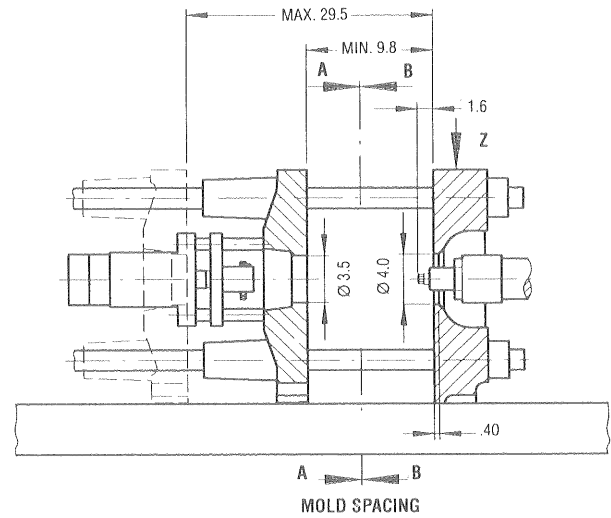
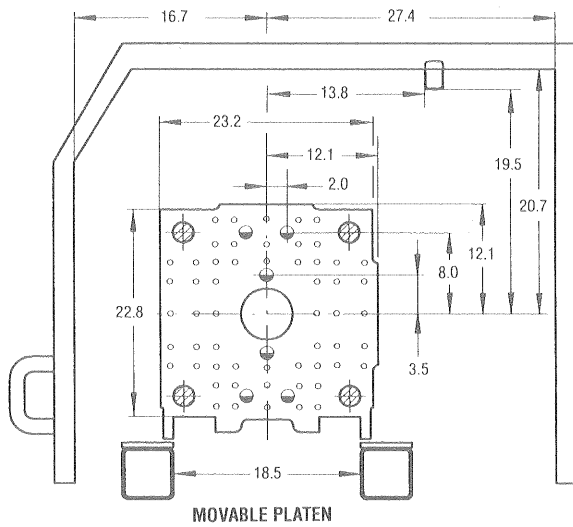
Clamp Force	US tons	112
	kN	1000
Clamp Stroke - Max.	in.	19.7
	mm	500
Open Daylight - Max.	in.	29.5
	mm	750
Mold Thickness - Min.	in.	9.8
	mm	250
<b>Distance Between Tie Bars</b>		
Horizontal	in.	15.7
	mm	400
Vertical	in.	15.7
	mm	400
<b>Platen Size</b>		
Horizontal	in.	23.2
	mm	590
Vertical	in.	22.8
	mm	580
<b>Ejector</b>		
Ejector Force	US tons	4.6
	kN	41
Ejector Stroke	in.	5.9
	mm	150

# VAN DORN®

## 100 ET SERIES

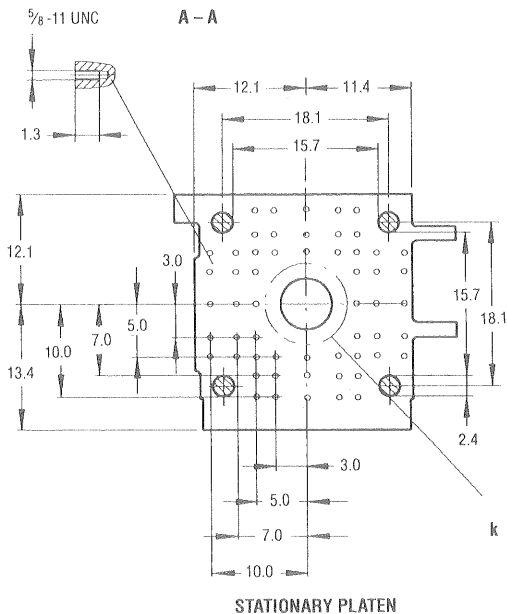


B-B

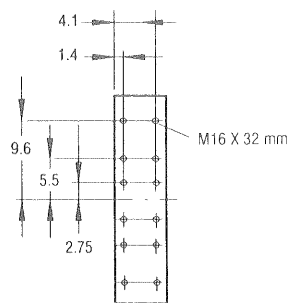


⌀ Diameter of bore 1.1 inches throughout  
 k = smallest permissible mold Ø 9.1 inches

A-A



Z



### VAN DORN DEMAG®

Van Dorn Demag Corporation  
 11792 Alameda Drive  
 Strongsville, Ohio 44136 USA  
 tel: 440/876.8960  
 fax: 440/876.4383  
 web: www.vandorn.com

# VAN DORN®

## 110 ET SERIES

### Injection Unit

	Measure	110-7.3 ounce			110-9.7 ounce		
		Std. 1100-310	HiPr 1100-310	XHiPr 1100-310	Std. 1100-430	HiPr 1100-430	XHiPr 1100-430
International Size							
Injection Capacity (GPPS)	oz. g	7.3 207	5.6 158	3.5 100	9.7 275	7.7 217	5.6 158
Injection Capacity	cu. in. ccm	13.4 220	10.3 168	6.5 106	17.9 293	14.1 231	10.3 168
Recovery Rate (GPPS)	oz./sec. g/sec	1.66 47.0	1.16 33.0	0.78 22.0	1.66 47.0	1.31 37.0	0.92 26.0
Injection Pressure	psi bar	22,481 1,550	29,297 2,020	34,809 2,400	23,206 1,600	29,297 2,020	34,809 2,400
Injection Rate (@ 10,000 psi) (@ 700 bar)	oz./sec. g/sec	8.1 230	6.2 175	4.6 130	7.9 225	6.2 175	4.8 135
Injection Stroke	in. mm	6.9 175	6.9 175	5.9 150	7.2 184	7.2 184	6.9 175
Screw Diameter	in. mm	1.57 40	1.38 35	1.18 30	1.77 45	1.57 40	1.38 35
Screw L/D Ratio		20/1 20/1	20/1 20/1	20/1 20/1	20/1 20/1	20/1 20/1	20/1 20/1
Maximum Screw Speed	rpm rpm	624 624	624 624	624 624	500 500	500 500	500 500
Barrel Heating Capacity	kW kW	11.1 11.1	8.5 8.5	7.2 7.2	11.5 11.5	11.1 11.1	8.5 8.5

### General Machine Specifications

	Measure	110-7.3 ounce	110-9.7 ounce
Pump Motor	hp kW	30 22.0	30 22.0
Oil Capacity	gal. l	71 270	71 270
Machine Weight (approx.)	lb. kg	10,141 4,600	10,362 4,700
<b>Machine Dimensions</b>			
Length	ft. m	15.1 4.6	15.1 4.6
Width	ft. m	4.9 1.5	4.9 1.5
Height	ft. m	6.6 2.0	6.6 2.0

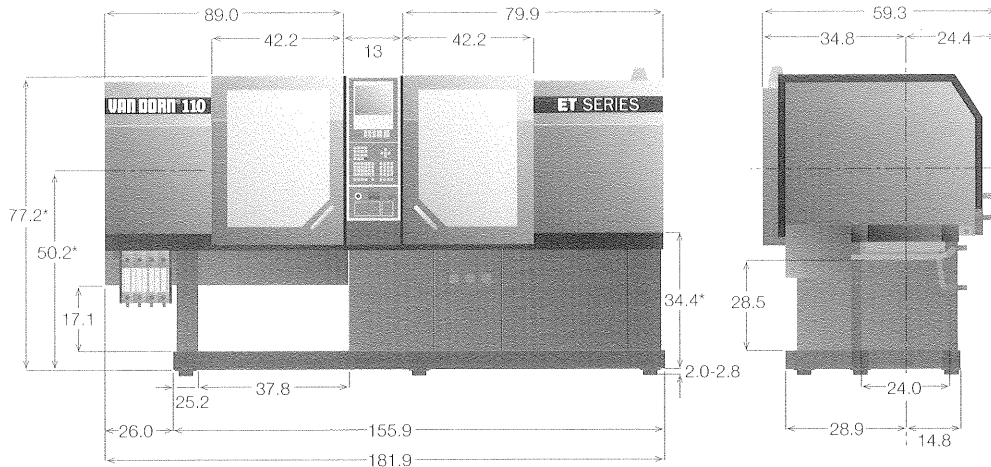
Performance specifications are based on theoretical data and mold, material and conditions. Since continuous improvement is Van Dorn Demag's policy, we reserve the right to change specifications, designs and performance data without prior notice or obligation.

The specifications listed are standard. However, Van Dorn Demag will provide engineered options and solutions to meet virtually any performance requirements including high-torque and high-speed configurations.

### Clamp Unit

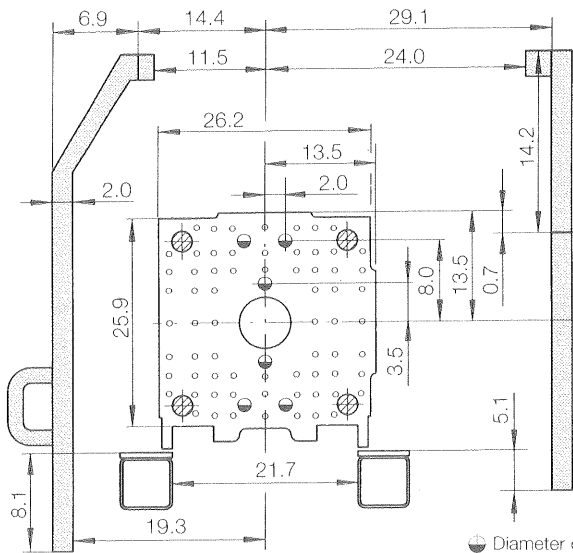
Clamp Force	U.S. tons kN	124 1,100
Clamp Stroke - Max.	in. mm	23.6 600
Open Daylight - Max.	in. mm	33.5 850
Mold Thickness - Min.	in. mm	9.8 250
<b>Distance Between Tie Bars</b>		
Horizontal	in. mm	17.7 450
Vertical	in. mm	17.7 450
<b>Platen Size</b>		
Horizontal	in. mm	26.4 670
Vertical	in. mm	26.4 670
<b>Ejector</b>		
Ejector Force	U.S. tons kN	4.6 41
Ejector Stroke	in. mm	7.1 180

# VAN DORN® 110 ET SERIES



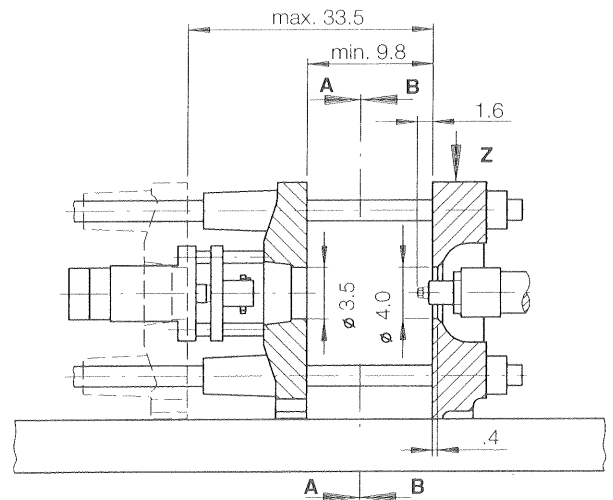
\* Dimension increases by 2.0-2.8 inches for anti-vibration mounts

### B - B



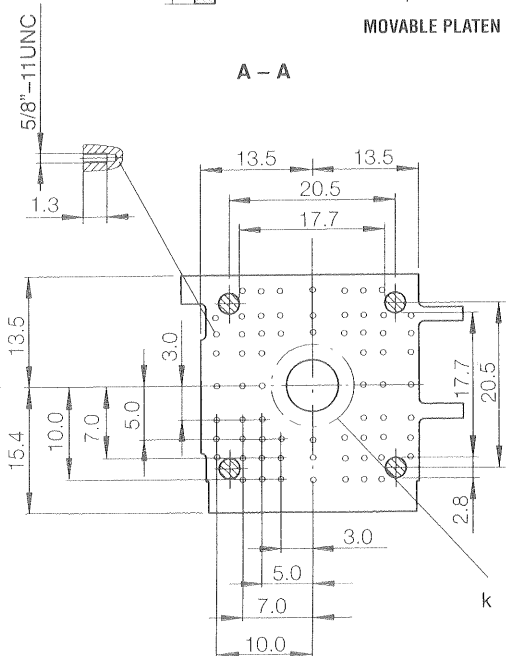
MOVABLE PLATEN

⊙ Diameter of bore 1.1 throughout

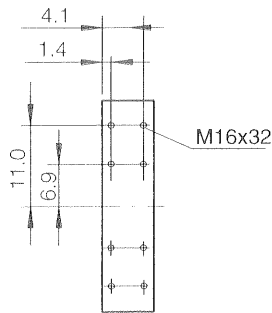


MOLD SPACING

### A - A



### Z



ROBOT MOUNTING PATTERN

**VAN DORN DEMAG®**

Van Dorn Demag Corporation  
 11792 Alameda Drive  
 Strongsville, Ohio 44136 USA  
 tel: 440/876.8960  
 fax: 440/876.4383  
 web: www.vandorn.com