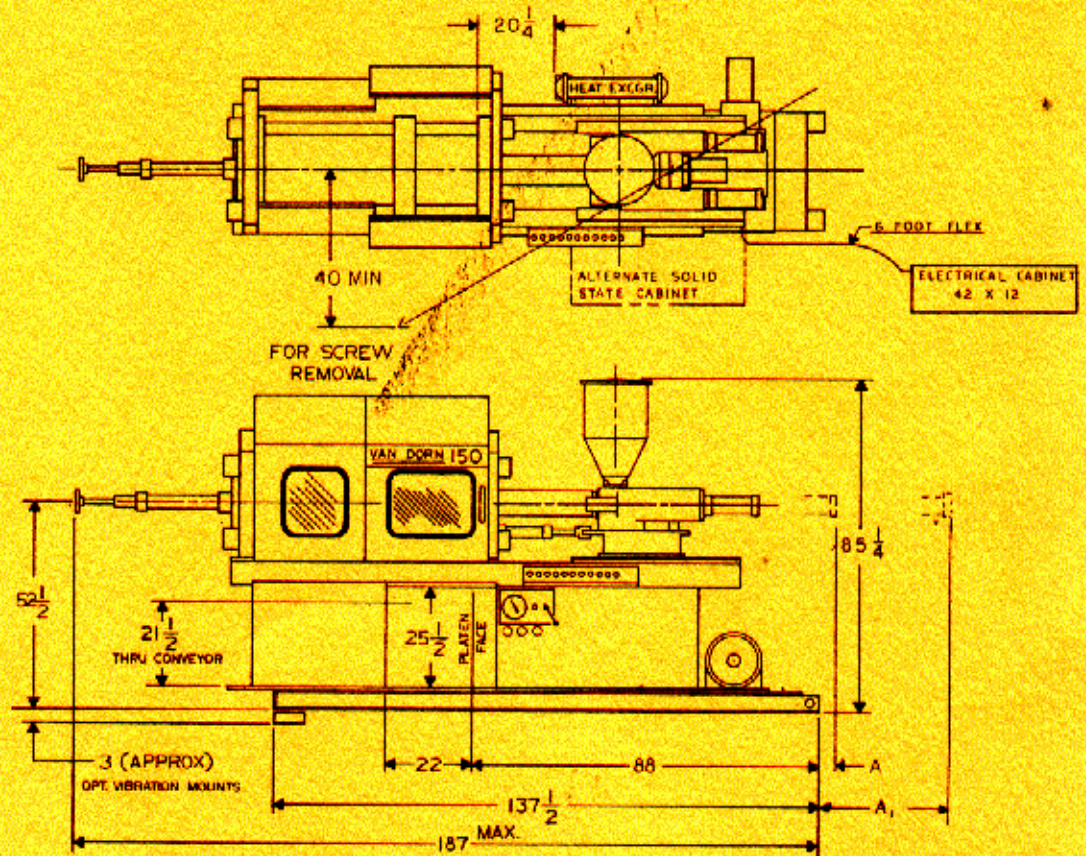
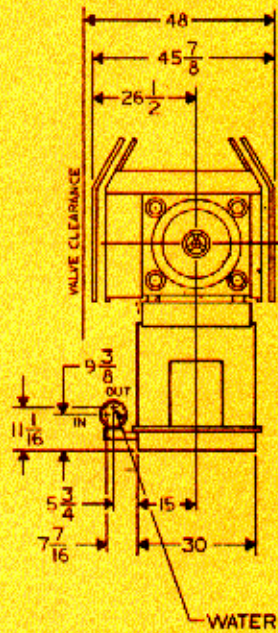


# VAN DORN®

## TOGGLE CLAMP

### 150-RS-8/12F

MACHINE	BARREL TYPE	
	STD BARREL	VENTED BARREL
150 RS 8F	--	7 3/4
150 RS 12F	--	--



#### Injection Unit

	150 RS 8F	150 RS 12F
Inject Capacity—Calculated (cu. in.)	14.9	23.2
Inject Capacity—G.P. Polystyrene (Oz.)*	8	12.5
Recovery Rate—G.P. PS (oz./sec.)†	.85	1.70
Injection Pressure—Max. (p.s.i.)	19,100	14,900
Inject Rate—at 10,000 p.s.i. (cu. in./sec.)	10.5	13.5
Inject Stroke (in.)	7.63	7.63
Screw Diameter (in.)	1.57	1.97
Barrel L/D Ratio	20:1	20:1
Screw Speed Range (R.P.M.)	30-365††	30-365††
Back Press. Adjust (screw rotating—p.s.i.)	75-300	75-300

#### General Specifications

	150 RS 8F	150 RS 12F
Pump Motor—Hydraulic System (HP)	20	20
System Pressure (p.s.i.)	1800	1800
Total Heating Wattage (KW)	8.0	11.5
Number of Heat Control Zones	4	4
Comb. Pump Capacity (G.P.M. @ 100 p.s.i.)	35	35
Oil Capacity (Gal.)	90	90
Hopper Capacity (Lb.)	85	85
Machine Weight (Lb. approx.)	10,500	10,900
Machine Dimensions—Length (ft.)	15.7	15.7
—Width (ft.)	4	4
—Height (ft.)	7	7

#### Clamping Unit

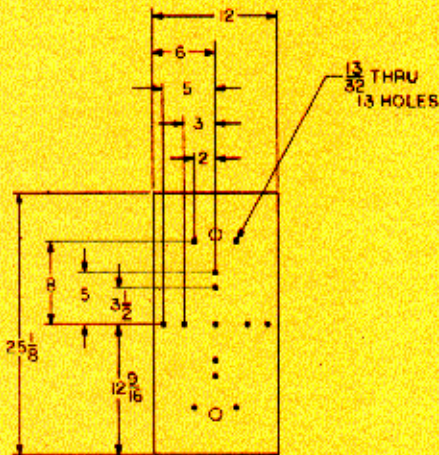
	150 RS 8F	150 RS 12F
Clamp Force (tons)	150	150
Clamp Stroke—Adjustable (in.)	6-12	6-12
Open Daylight—Max. (in.)	28.0	28.0
Mold Thickness—Min./Max. (in.)	6-16	6-16
Platen Size—Standard-HxV (in.)	27.50 x 25.50	27.50 x 25.50
Dist. Between Rods—Std. HxV (in.)	18 x 15.6	18 x 15.6
Tie Rod Diameter (in.)	3	3
Clamp Speed:		
Closing (in./sec.)	26	26
Opening (in./sec.)	34	34
Ejector Force (tons)	4.2	4.2
Ejector Stroke (in.)	3.0	3.0

\*Dependent upon mold, material and conditions.

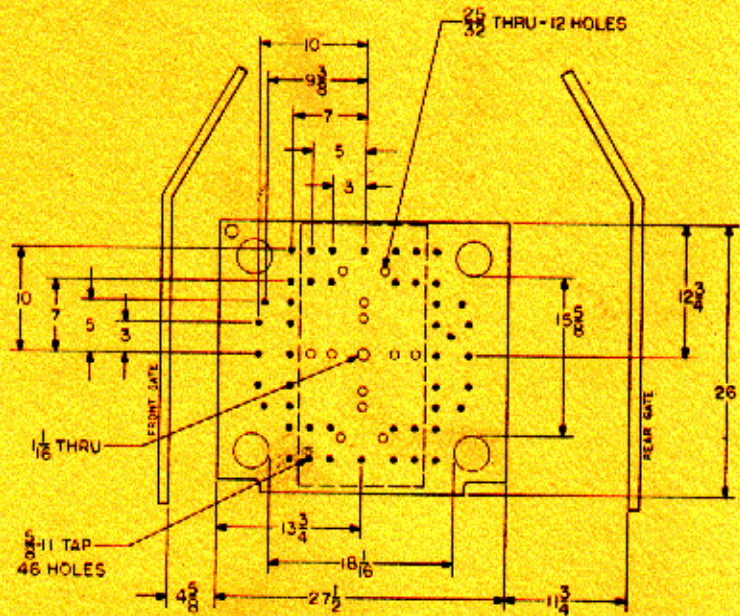
†Average value based on S.P.I. test procedures.

††Higher torque motor available with lower R.P.M. and recovery rate.

Since continuous improvement is Van Dorn's policy, we reserve the right to change specifications, designs and performance data without prior notice or obligation.



HYD. K.O. PLATE



MOVABLE PLATEN

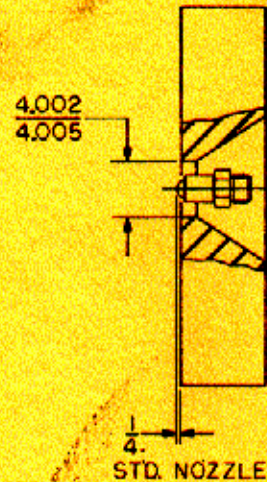
## 150-RS-8/12F

Van Dorn's fluid drive, or F-Series, toggle clamp machines feature hydraulically driven screws that generate high-quality homogeneous melts at high rates. Stable screw speeds and precise, infinitely variable back pressure control are features contributing to outstanding molding output.

Add faster set-ups, improved molding speeds and minimal maintenance and you have the injection molding capability molders identify with the name, Van Dorn.

### STANDARD FEATURES

- Large part removal clearance • Purge guard with interlock
- Pivoting injection unit • Integral-base drip pan • Full-floating hardened toggle pins • Automatic oil lubrication.



STATIONARY PLATEN

# VAN DORN®

Committed to the future of plastics

VAN DORN PLASTIC MACHINERY CO., / A Division of Van Dorn Company

11792 Alameda Dr. • Strongsville, Ohio 44136 • Write: P.O. Box 8848 • Strongsville, Ohio 44136 • Telephone: (216) 238-8860

Effective June 1, 1988 • Litho in U.S.A.