

Injection Unit

International Size	Measure	1920		2800		4300	
		Std.	HiPr	Std.	HiPr	Std.	HiPr
Injection Capacity (GPPS)	oz. g	40.3 1,143	29.6 840.0	59.2 1,678	45.3 1,285	89.6 2,540	63.5 1,801
Injection Capacity	cu.in. ccm	74.0 1,212	54.4 891	108.6 1,779	83.1 1,362	164.4 2,694	116.6 1,910
Recovery Rate-Std.	oz./sec. g/sec.	2.25 64	2.23 63	3.04 86	2.46 70	3.74 106	2.54 72
Injection Pressure-Max.	psi bar	22,916 1,580	31,191 2,151	22,656 1,562	29,592 2,040	23,136 1,595	32,625 2,249
Injection Rate (@ 10,000psi) (@ 700 bar)	cu.in./sec. ccm/sec.	38.0 623	27.9 458	38.4 630	29.4 482	37.6 617	26.7 437
Injection Stroke	in. mm	12.4 315	12.4 315	13.9 354	13.9 354	15.0 380	15.0 380
Screw Diameter	in. mm	2.76 70	2.36 60	3.15 80	2.76 70	3.74 95	3.15 80
Screw L/D Ratio		20/1	20/1	20/1	20/1	20/1	20/1
Maximum Screw Speed-Std.	rpm	205	318	179	224	150	150
Back Pressure Adjust	psi bar	75-300 5-21	75-300 5-21	75-300 5-21	75-300 5-21	75-300 5-21	75-300 5-21
Barrel Heating Capacity	kW	33.4	25.6	38	34	56	42.8

General Machine Specifications

	Measure	1920	2800	4300
Pump Motor	hp kW	75 56	75 56	75 56
Pump Capacity (@100psi/7 bar)	gpm Lpm	104 397	104 397	104 397
Oil Capacity	gal. L	130 492	130 492	130 492
Machine Weight (approx.)	lb. Kg	*	*	*

Machine Dimensions

		1920	2800		4300	
		Both	Std.	HiPr	Std.	HiPr
Length	ft. m	25.7 7.8	25.8 7.90	25.7 7.80	27.7 8.50	26.7 8.20
Width	ft. m	7.40 2.20	7.40 2.20	7.40 2.20	7.40 2.20	7.40 2.20
Height	ft. m	8.70 2.70	8.70 2.70	8.70 2.70	8.70 2.70	8.70 2.70

*Consult your sales representative

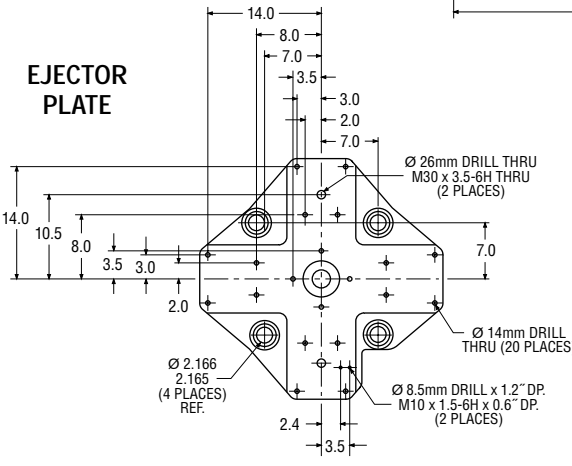
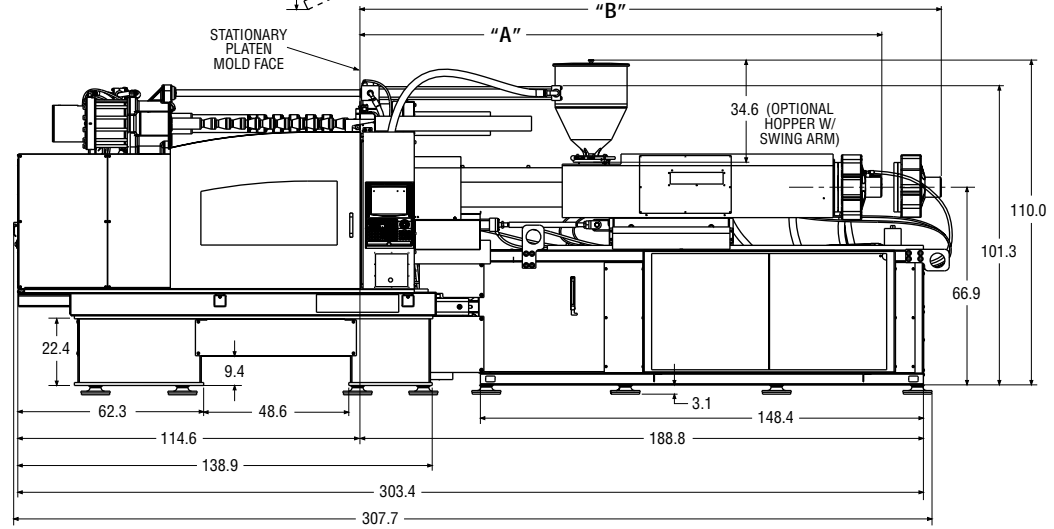
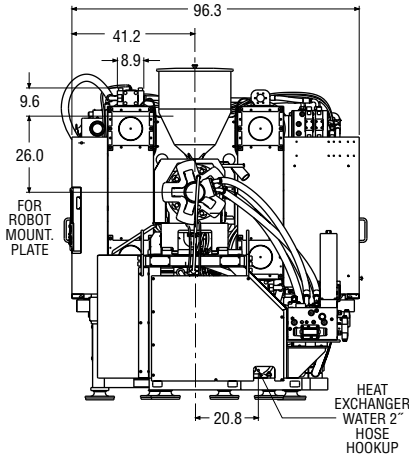
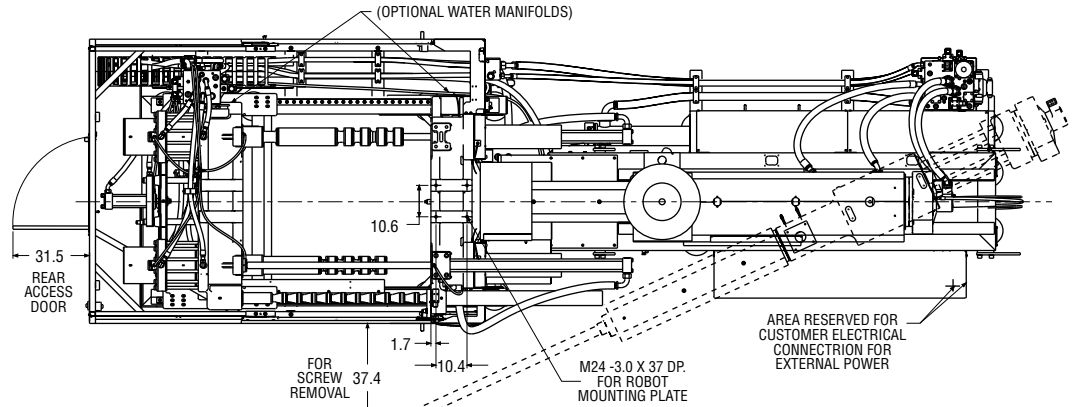
Performance specifications are based on theoretical data and mold, material and conditions. Since continuous improvement is Van Dorn Demag's policy, we reserve the right to change specifications, designs and performance data without prior notice or obligation.

The specifications listed are standard. However, Van Dorn Demag will provide engineered options and solutions to meet virtually any performance requirements including high-pressure and high-speed configurations.

Clamp Unit

Clamp Force	U.S. tons k N	500 4,450
Open Force	U.S. tons k N	23.0 208.0
Clamp Stroke-Max.	in. mm	51.1 1,300
Open Daylight-Max.	in. mm	62.9 1,600
Mold Thickness-Min.	in. mm	11.8 300
Mold Thickness-Max.	in. mm	34.2 870
Distance Between Tie Bars		
Diameter	in. mm	36.4 925
Vertical	in. mm	36.4 925
Platen Size		
Horizontal (Standard)	in. mm	51.1 1,300
Vertical	in. mm	51.1 1,300
Clamp Speeds		
Close Fast (@1000 psi/69 bar)	in./sec mm/sec	49.3 1,253
Open Fast (@1000 psi/69 bar)	in./sec mm/sec	51.3 1,304
Ejector Force	U.S. tons k N	15.7 140
Ejector Stroke	in. mm	9.8 250

Injection Unit	A (in.)	B (in.)
STANDARD BARREL		
70mm 20:1 1920RR	158.8	178.5
70mm 25:1 1920RR	172.4	192.3
80mm 20:1 2800RR	174.8	194.5
80mm 25:1 2800RR	190.6	210.2
95mm 20:1 4300RR	198.4	218.1
95mm 25:1 4300RR	217.1	236.8



OPERATOR SIDE

